

FOR SALE!

HD OB VAN prepared for up to 13 cameras

Price on request



DETAILS: HD- OB Van Mercedes AXOR 1823 – one side extended – prepared for up to 13 live camera chains

We can offer:

1.HD OB Facts:

Vehicle: MERCEDES AXOR 1823
Mileage: 97 000 km
Engine: 205 kW (279 PS); 6374 cm3
Age: of Truck: 2009
Finishing of OB: First production 2011

Euro Emission Norm: EURO IV

Main Box: One side extended

Polyurethane mono block sandwich panel with steel enforcements and white polyester laminate

- Storage Boxes: Inox construction
- Weight: 18 000 kg
- Length: 11,60 meter
- Height: 4,00 meter
- Width: 2,50 meter
- Width when expanded: 3,70 meter
- Voltage: 380/415 & 220/240 volt
- Connector Type: CEE 63 Amp 5 Pin

Hydraulics:

OB has hydraulic automatic support with automatic levelling system of the truck in parking mode

Aircondition:

HD OB truck has three different air conditioning system:
DAIKEN indoor/ outdoor system , two external units and three internal units for cooling/heating (main video room, audio room, main racks + eng room)
Samsung additional external/ internal unit for eng room

Guntermann&Drunk Access technology

Whether it's the director's desk or audio desk or Slo-Mo – despite the reduced space in OB vans, each console needs to have simultaneous access to the central computer technology stored in the server rack. Switching between computers is carried out through a KVM matrix switch (e.g. DVICenter DP64) to which multiple computers are connected. The flexible operation concept of the OB van is there fore supported in an optimal way.

2.APC SMART UPS RT 20 000 kWA

3.BATTERY PACK

4. UPS APC BR1200GR

5. - VUTRIX MONITOR 24" HD QUAD S.N.:



24HR10192, 24HR10193, 24HR10197, 24HR10198, 24HR10199, 24HR10200, 24HR10201, 24HR10202, 24HR10203, 24HR10204, 24HR10205, 24HR10207, 24HR10208, 24HR10209, 24HR10210, 24HR10211, 24HR10213, 24HR10214, 24HR10215

Input options: SDI, HDSDI, Integral quad processing
Native HD resolution up to 1920 x 1200
Accept all formats of HD signals
Adjustable aspect ratio, colour temperature, reverse gamma

Fully network addressable and controllable
Safe area cages
Separate RGB channel monitoring
UMD and Tally information

6. VUTRIX MONITOR 17" HD QUAD 5 pieces

S.N. A1710590, A1710620, A1710619, A1710621, A1710613, A1710616
Input options: SDI, HDSDI, Integral quad processing
Native HD resolution up to 1920 x 1200
Accept all formats of HD signals
Adjustable aspect ratio, colour temperature, reverse gamma
Fully network addressable and controllable
Safe area cages
Separate RGB channel monitoring
UMD and Tally information

7. SONY BKM 15R



S.N. 2001869
Central control unit *up to 32 monitors can be controlled
LAN (10 BASE-T/100 BASE-TX) RJ-45x1
AC 100/240V or DC 5V in - 2.1kg (4 lb 10 oz)

8. SONY BVM A20



S.N. 2000000 - BVM-A20 is a multiformat master control monitor - equipped with a high resolution Trinitron CRT - monitor provides very high-resolution pictures for the most critical picture evaluation - monitor accepts the wide variety of digital signals necessary to allow you the freedom to produce in whatever format you choose.

9. SONY BVM A14F5M



S.N. 2002118 - BVM-A14F5M is a multiformat viewing monitor - equipped with a high resolution Trinitron CRT - monitor provides an excellent picture resolution of 800 TVL - monitor accepts the wide variety of digital signals necessary to allow you the freedom to produce in whatever format you choose.
The BVM-A Series can be connected via an Ethernet control system using standard network components

10. SONY LMD 9050



S.N. 1007153 - one-piece style monitor for HD/SD multi-format capability
Excellent Brightness and Contrast
Wide Viewing Angle panel has a wide viewing angle of 170 degrees, horizontally and vertically enabling images to be viewed from various positions and angles

Power Consumption is as follows: with DC operation : Approx. 24W with AC Adaptor operation : Approx. 28W -
The hand-held type monitor can be controlled remotely via their parallel remote connector.
There are 27 functions in the remote menu (such as ability to switch input signals), of which seven can be allocated to the connector - Control buttons, input and output, and monitor stand are all combined with the LCD panel to achieve an all-in-one design

11. GVG KAYAK-HD 300 PROD. SWITCHER



S.N. GV056293U - compact, lightweight 8 RU frame - switchable between HD and SD production formats
SetDef option for up/down ,cross-converting output formats
MatchDef option for up/down ,cross-converting input formats - 72 inputs/ 36 outputs

12. GVG KHD-300-3 M/E

S.N. GV069084U
3 M/E Kayenne XL panel - 32 button source selectors - 4 Ram Recorders
Four full-function keyers per full M/E, each with linear and luminance keying, wipes, and freeze-frame buffer, standard
2 Flexible Chroma Keyers - Panel Control Unit with redundant power four full-function keyers per full M/E, each with linear and luminance keying, wipes, and freeze-frame buffer, standard

13. GRASS VALLEY CP 300



S.N. BH11030427
1RU panel - 24 x 1 Single Bus Control Panel
Audio follow video switching - "Protect/lock" output indicator (button flash)

14. MIRANDA 128x128 FRAME NV5128



S.N. 21707126 - a mid-size, multiformat router - 128 x 128 matrix size - 8RU frame - No format limitations
Mix-and-match: HD, SD, ASI, analog video, analog audio, AES, Time Code - Redundant PS

15. MIRANDA NV 915 router control system

S.N.217127942
two Ethernet ports, one for routers and panels, and the other for configuration - two USB ports, a COM port and a monitor port - flash-based storage
support for up to 32 NV96xx control panels - support for up to 4 NVISION series routers 1RU, 9"deep

16. MIRANDA NV 9601



S.N. 217125175
2RU panel - XY and multi-destination modes - Up to 221 programmable levels - 36 configurable function buttonsBreakaway switching, quick source and scrolling

17. MIRANDA NV9603A



S.N. 217127813

1RU panel - Allows for full XY control in 1RU - Breakaway switching, quick source preset and scrolling - Configurable function buttons - Double map source or destinations

18. MIRANDA NV 9604



S.N. 217128848

1RU panel - Double mapping of 32 buttons in slaved mode - Ideally suited for QC stations, tape input, master control bypass - Single destination, multi-destination or slaved to NV9602 panel - Configurable function buttons, for example: lock, protect, salvos, breakaways

19. MIRANDA NV 9641



S.N. 217134311, 217130374, 217134316 - 1RU panel package less than 2.5 in deep - XY multi-destination operation - 8 input and 4 output utility GPIs built-in, ideal for joystick override applications - Breakaway switching, quick source, level mapping, salvos and scrolling
Allow full customized configuration for each page of operation

20. MIRANDA DENSITE 3



S.N. 084499-R433770152, 084499-R44161039, 084499-R44161020, 084499-R44161037, 084499-R44161028 - Multiple video and audio formats can be fitted in a single frame - 3 RU and 2 RU Densité modules can co-exist in the same frame - Easy configuration by front panel or remotely via the Ethernet frame controller
Choice of control panels, including the RCP-200 advanced remote panel and the PC-based iControl Solo GUI - Hot-swappable power supply, with optional redundant power supply - Redundant Ethernet connection - up/down/cross converters, de/embedders, distributions inside

21. VIKINX NET. ROUTER 16x



S.N. 622 - 1RU - Software based Configurator for easy system set-up - TCP/IP, RS-232 and NCB control (RJ45) - Programmable multi- single- and dual bus control panels - Ultra slim frame depth - Low power, high reliability design - Redundant power supply system with front indicators

22. VIKINX NETWORK CONTR. PANEL 16x



S.N. 12493B3501 - 1RU panel - Software based Configurator for easy system set-up - TCP/IP, RS-232 and NCB control (RJ45) - Redundant power supply system with front indicators AUDIO

23. STUDER PANEL VISTA 5SR



S.N. 071023 - 32 Fader

24. STUDER CORE LIVE

S.N. 1362 - Inputs/Outputs: 128 Total Inputs; 112 Total Outputs - Surround Capabilities: 5.1 metering and surround monitor module; Dolby E encoding/decoding system - 2 xBrdige card - 3 x DSP card

25. STUDER RACK D21



S.N. 5356 - 3 RU - Inputs/outputs cards

26. GENELEC AMPLIFIER AND Active In-Wall LOUDSPEAKER AIW25



S.N. 6001120, 6001121

two-way active speaker with a 5" bass driver and 3/4" treble driver equipped with Genelec's DCW - RAM2 remote amplifier module which includes active crossover circuitry and separate, matched 40 Watt power amplifiers for the bass and treble drivers - The AIW25 has a frequency response of 70 Hz to 18 kHz (+/-2.5dB) and a maximum peak SPL of 110 Db

27. GENELEC LOUDSPEAKER 8130AP

S.N. 6003991, 6003992, 6003997, 6003994, - AES/EBU digital audio and analog audio inputs in a single speaker system - 192 kHz/24 bit digital audio interface - automatic detection of word length and sampling frequency - support single-wire and dual wire digital input mode - perfect level match throughout the system from D/A converter to power amplifier outputs - compatible with LSE stereo subwoofer - high system integration and ease to use

28. GENELEC LOUDSPEAKER 8020BPM



S.N. 6022677, 6022668, 6022674, 6022680 - Maximum sound pressure level: 95 dB - Frequency response: 66 Hz - 20 kHz (\pm 2.5 dB), 65 Hz - 21 kHz (-3 dB) - Crossover frequency: 3.0 kHz - Driver dimension: Bass 4 in + Treble 3/4 in metal dome + DCW™ - Amplifier power: Bass 20 W + Treble 20 W - Dimensions: H x W x D 242 x 151 x 142 mm with Iso-Pod™ - Weight: 3.7 kg (8.1 lb) - Connectors: 1 x XLR analog in

29. GENELEC SUBWOOFER 7261APM

S.N. 6001241 - active digital subwoofer for 8130A (Surround up to 7.1) - DSP-Filter, Ethernet Connection - 19-100 Hz (+/- 3dB), 120 Watts - 10", Connections: 4 x AES/EBU I/O XLR - Dimensions: 527 x 462 x 363 mm (HxWxD) - Weight: 27 kg

30. SONIFEX RB-DSS10



S.N. 25444, 23824 - 1RU panel - the RB-DSS10 digital source selector is a 1U rack-mount which produces an AES/EBU and S/PDIF level digital audio output from 10 selectable AES/EBU or S/PDIF digital input signals - the

digital receivers in this unit are fully 24 bit, 96kHz capable - the headphone output has its own volume control, which is independent of the level adjustment for the main outputs, and has a maximum output level of +12dBu

31. SONIFEX RM-MC1L



S.N. 24544

1RU panel - The RM-MC1L is a stereo unit with a single stereo balanced analogue input and output on XLRs - It has a master volume control that adjusts the attenuation on the output channels from 0dB down to -86Db - A CUT control mutes the audio outputs when enabled, whilst a DIM control attenuates the audio output channels by a pre-set amount from -2dB to -23dB.

32. SONIFEX RB-DA24MD



S.N. 061793

1RU - The RB-DA24MD is a 1U rack mount high performance 24 way audio distribution amplifier - It has 2 inputs which can be each individually routed to 12 outputs, or mixed and routed to all 24 outputs - The inputs can be configured as either dual mono, input 1 routed to outputs 1-12 and input 2 routed to outputs 13-24, or mixed-mono, inputs 1 and 2 mixed at a pre-set level and routed to all 24 outputs - When set to mixed-mono operation there are 3 different output mix level modes, enabled by altering internal jumpers, providing -6dB, -3dB or 0dB adjustment of the output - The XLR inputs and D-type outputs are electronically balanced and can be wired unbalanced

33. DENON CD PLAYER DN-C620



S.N. 43360111502538 - 1 RU Rackmount Size with slot-in CD mechanism - Supports CD-DA (.cda), WAVE (.wav), MPEG-1/2 Layer III (.mp3) - +/- 12% Pitch Control - Balanced Audio Output (XLR) - Digital Audio Output with S/PDIF and AES/EBU Connectors - Fixed and Variable Level Unbalanced Audio Outputs (RCA x 2) - IR, RS-232c (9-pin D-sub), and GPIO (25-pin D-sub) controllable

34. TASCAM DIG. REC. SS-R1



S.N. 160123 - Solid state recording to Compact Flash media - One-rack-space compact design - Records in WAVE or MP3 format to CF Card - Balanced XLR and unbalanced RCA line input and output - S/PDIF coaxial digital in and out with sample rate converter - Power on play - Auto track increment (level or time) - PS/2 keyboard input for folder/file naming and remote control - RS-232C serial control - DB-25 parallel control port

35. TASCAM LM-8ST



S.N. 210390034, 210390015 - 8 stereo channel / 4-buss line mixer - (8) stereo 1/4" TRS balanced inputs with -10/+4dB switch - Mic input with trim control on front panel - 2-segment LED meter per channel - ST1 and ST2/AUX level control per channel - ST1 and ST2/AUX master level controls - Each channel switchable to ST2 (pre fader) or AUX (post) output - 1/4" and 1/8" stereo headphone outputs - XLR balanced outputs for ST1 and ST2/AUX

36. SOUNDFIELD UPM-1 STEREO 5.1. CONVERTER



S.N. 330 - 1 RU Rackmount Size - a hardware stereo-to-5.1 upmix processor - designed for HD broadcasters - two main modes of operation - Upmix mode and Matrix Decode mode - The UPM-1 can be either internally or externally clocked

37. TSL FG-AMU1-BHD+



S.N: 58620 - Dual HD/SDI video inputs - Dual high-resolution 106-segment tri-colour bargraph display - DUAL Auto-sensing HD/SDI video input - SMPTE 259M, 296M, 274M for 720P/1080i at 525/625 frame rates - De-embedded audio monitoring from digital video source - Re-clocked digital video and composite (PAL/NTSC) video outputs - User-selectable alpha-numeric indication of level, accurate to 0.1dB - Scales available: UK PPM, EBU PPM, VU, Nordic, DIN, EBU Digital - Select multiple audio inputs for 1:1 mix comparison - Selectable bargraph loudness indication – (ISO 226) - Comprehensive stereo audio monitoring outputs - Audio Inputs :4 x balanced AES/EBU (XLR & D25) ; 2 x balanced stereo analogue (XLR)

Audio Outputs : Fixed AES and variable analogue stereo monitoring (XLR & D-Sub) Stereo 15-watt loudspeaker amplifier & stereo headphone (front panel jack)

38. TSL TALLYMAN TM2 PLUS



S.N: 58769 - 1 RU Rackmount Size - 6 x RS422 ports - 1 x RS232 D9 ports - Tally Inputs: 32 contacts to ground, - Tally Outputs: 48 isolated relay o/ps - 16 x RJ45 UMD display ports - Powers up to 70 D8C displays: 70 PLU - Addresses 126 displays per port - 1 x 10/100 Ethernet port - Interfaces to all known mixers, routers and multiviewers - Flash card operating system - Windows CE operating system - Dual Redundant PSUs

39. RTW TOUCH MONITOR RTW TM7



S.N. 1036 - Powerful DSP platform for parallel display of multiple instruments - 16 channel audio interfacing including analog, AES3, AES3id (depending on selected hardware version) - G-SDI interface for audio signals of 3G/HD/SD-SDI data streams (depending on selected hardware version) - Ethernet/LAN, USB, VGA and GPIO ports - 7" touch screen 16 : 9 TFT - Table-top unit, approx. 198 x 138.5 (163) x 46 (95) mm, W x H x D (with table-stand), incl. mains adapter - Standard Software (2-ch. PPM, TruePeak meter, spot correlator, global keyboard, gain reduction)

40. HARRIS VIDEOTEK VTM 4100 MULTI-FORMAT TEST & MEASUREMENT CONSOLE



S.N. 090600751 - 1 RU Rackmount Size - User Configurable Hardware - Display engine flexibility - Dual auto detecting inputs for 3 Gb/s HD/SD-SDI, HD/SD-SDI, SD-SDI, or Analog Composite - Single input ASI monitoring option

Standards: SMPTE 424M, SMPTE-292M, SMPTE-259M-C, NTSC/PAL - Multiple Reference Inputs - GPI and Router control - Dual HD/SD-SDI Input - Dual 3Gb/s HD/SD-SDI Input - Dual ASI Input Module
Meter and monitor up to eight channels of Analog, AES/EBU or Embedded - Dolby® Digital, Dolby® Surround EX™, Dolby®-E, Pro-Logic I formats

41. RIEDEL ARTIST 64



S.N. 1 410033 140069 - Maximum matrix size 1024 x 1024 - Distributed, masterless system architecture - Redundant dual ring fiber optic network - Up to 12x network nodes within a single fiber network - DSP at every I/O for audio signal processing - VOX at every port - Hot swap of all modules - Redundant power supplies - Redundant node controller - Ethernet tunneling through Ethernet interface - Intuitive configuration software (Director) - Max. ports per frame 64 - Multiple PCs can configure the same system / user rights - management - Number of controller / client / GPI card slots per frame 2 / 8 / 1 - External sync (AES3 / Word Clock) - Alarm signalization (Hardware/Director)

42. RIEDEL ARTIST RCP 1012E



S.N. 1 100020 130318, 1 100012 130470, 1 100046 130200, 1 100023 130209, 1 100020130301 - 1RU panel - Control Panel 12 keys - Balanced analog line level inputs / outputs (2x / 2x) - GPI opto-inputs /relay outputs on DB9 connectors (3x / 3x) - Integrated power supply

43. RIEDEL RIFACE



S.N. 4861048140051 - universal radio interface to connect wired communication systems with walkie-talkie radio systems - 2RU panel - Convenient operation via color display and rotary encoder - DSP-presets incl. EQ - Advanced signalisation - Slot for option cards - Reduction in weight - Enhanced thermal management

44. G&D KVM SWITCH NEO 4



S.N. GD03041906 - Provides ports for 4 user modules and 32 computer modules - Expandable to max. 32 consoles and 2048 computers - Two network ports - Transmission up to 300 m over CAT cable at maximum resolution - Integration of DVI computers with CATpro2-DVI-Audio-UC - VGA colour mode 32 bits - Video resolution over IP max. 1920 x 1200 @ 60 Hz according to VESA CVT-RB, colour mode 8 bit - Automatic video setting, which can be adjusted to each user - Configuration over web interface Supports external authentication via LDAP, Active Directory, TACACS+, Radius - Redundant power supply

44. G&D KVM MODUL U CON

S.N. GD03041907, GD03041908, GD03041909, GD03041910 - UCON for direct access - console up to 300 metres away from the computer module - VGA Video - Keyboard/Mouse PS/2 + USB - Audio (speakers) - select computers via OSD or hotkeys - configuration via OSD (and web interface with CATCenter NEO) supports both TS and Push-Get function

45. MONITOR DELL 1715SC

S.N. CN-DNN4KK-64180-4BC-11DU

46. HP PRO CURVE SWITCH J9728A 2920-486

S.N. SG49FLY02K

47. HP PRO CURVE SWITCH J9021A 2810-246

S.N. CN036XI0C5

48. HP PRO CURVE SWITCH J9022A 2810-486

S.N. CN050XJ05R

49. HP PROCURVE REDUDANT SUPPLY J8168A

S.N. CN038QF01Z

Pictures:



sports tv media distribution

Paradeisergasse 9 • 9020 Klagenfurt, Austria
Tel.: +43 463-90 8000 • Fax: +43 463-90 8000-99
e-mail: stvmd@stvmd.com • <http://www.stvmd.com>



Production Gallery

sports tv media distribution

Paradeisergasse 9 • 9020 Klagenfurt, Austria
Tel.: +43 463-90 8000 • Fax: +43 463-90 8000-99
e-mail: stvmd@stvmd.com • <http://www.stvmd.com>





sports tv media distribution

Paradeisergasse 9 • 9020 Klagenfurt, Austria
Tel.: +43 463-90 8000 • Fax: +43 463-90 8000-99
e-mail: stvmd@stvmd.com • <http://www.stvmd.com>



sports tv media
distribution

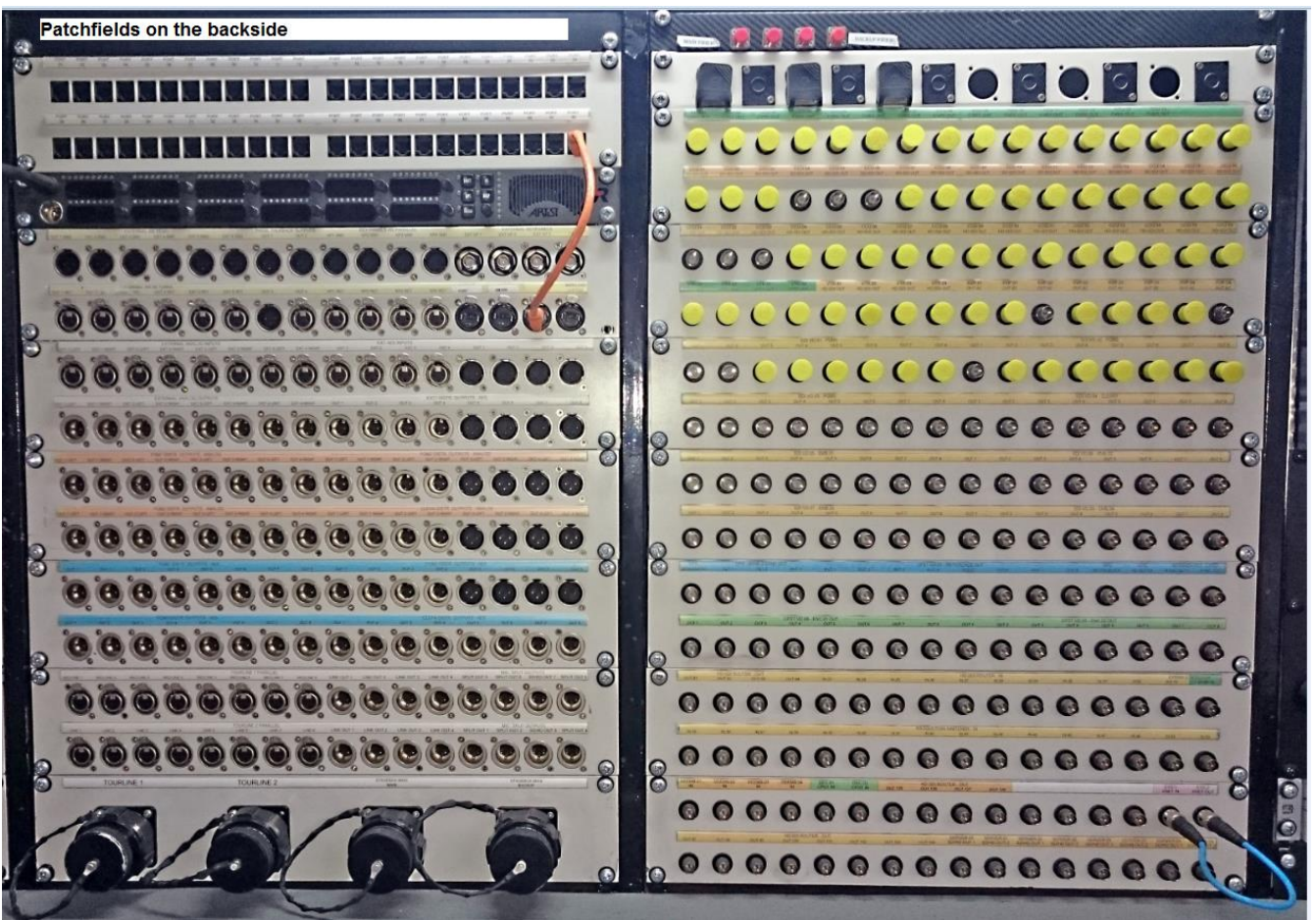
Paradeisergasse 9 • 9020 Klagenfurt, Austria
Tel.: +43 463-90 8000 • Fax: +43 463-90 8000-99
e-mail: stvmd@stvmd.com • <http://www.stvmd.com>

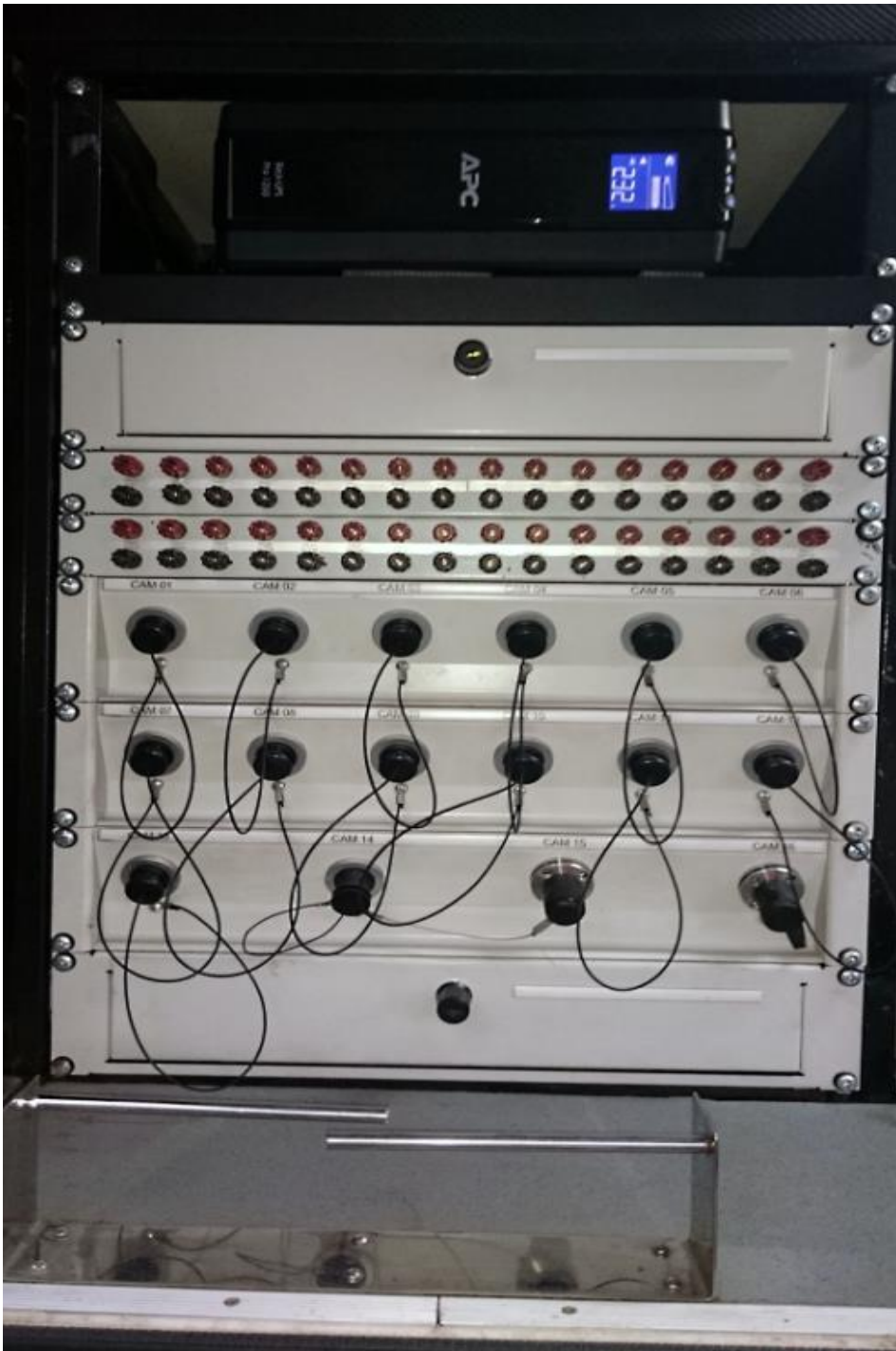


sports tv media
distribution

Paradeisergasse 9 • 9020 Klagenfurt, Austria
Tel.: +43 463-90 8000 • Fax: +43 463-90 8000-99
e-mail: stvmd@stvmd.com • <http://www.stvmd.com>







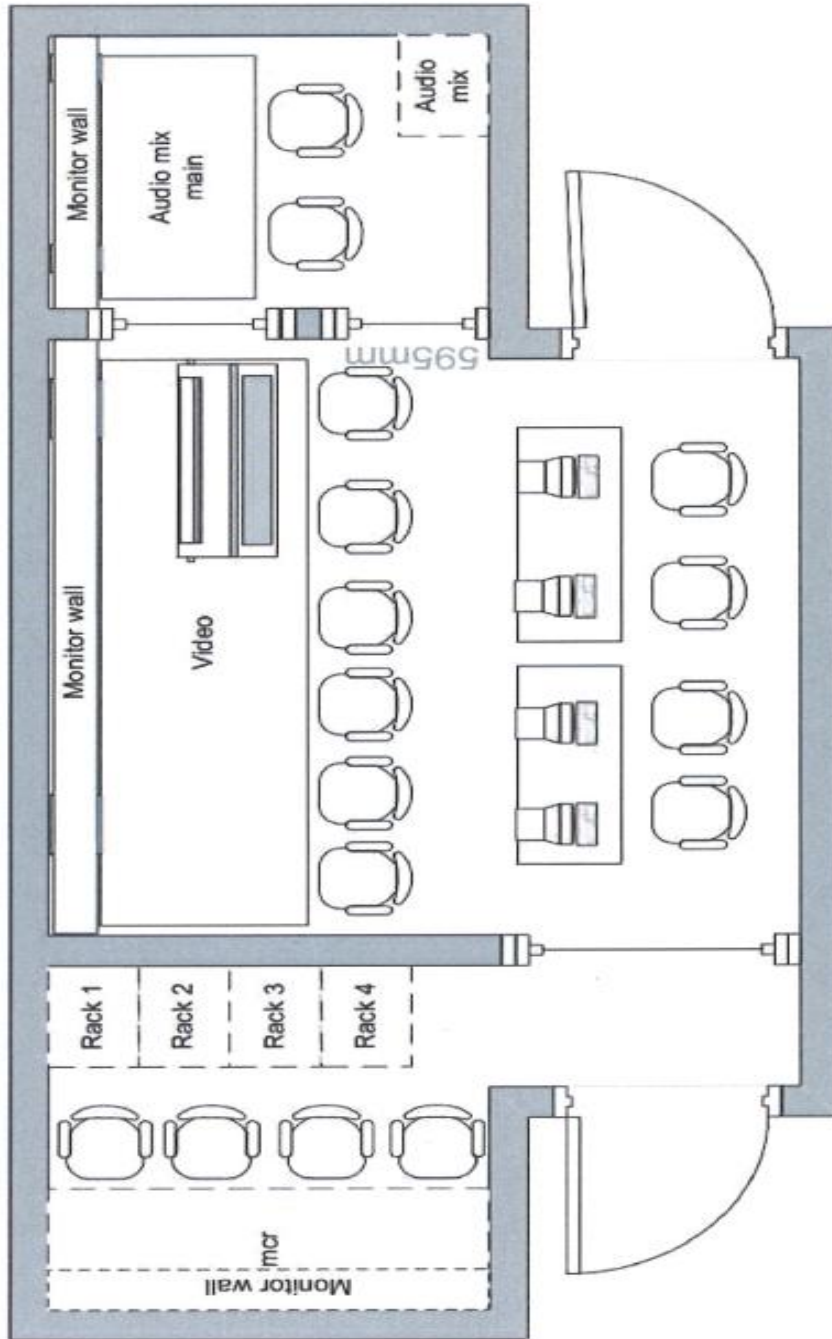
sports tv media
distribution

Paradeisergasse 9 • 9020 Klagenfurt, Austria
Tel.: +43 463-90 8000 • Fax: +43 463-90 8000-99
e-mail: stvmd@stvmd.com • <http://www.stvmd.com>





Room Layout:



Room Layout HD OB

sports tv media
distribution

Paradeisergasse 9 • 9020 Klagenfurt, Austria
Tel.: +43 463-90 8000 • Fax: +43 463-90 8000-99
e-mail: stvmd@stvmd.com • <http://www.stvmd.com>

For further information please contact:

sports tv media
distribution

Otmar Valzachi
sports tv media distribution GmbH

Paradeisergasse 9
9020 Klagenfurt

AUSTRIA

Tel:+43 463 908000
Fax:+43 463 908000 99
Mobile:+43 676 848606211
email: ov@stvmd.com
<http://www.stvmd.com>