

FOR SALE!

**Used Panther Pixy Crane - Panther Trixy 3 Axis Remote Head -
Panther Husky Dolly - Panther Husky Dolly Rail Set -
Panther Heavy Duty Tripod System - Equipment Set**

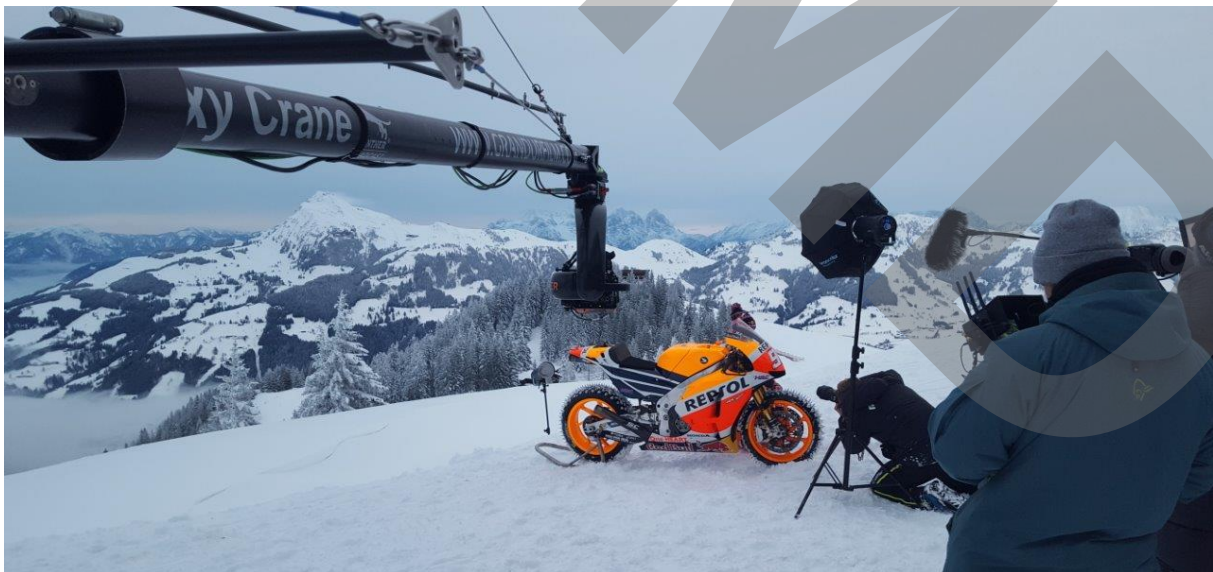
Consisting of:

- 1x used Panther Pixy Crane Version 7
- 1x used Panther Trixy 3 axis remote head including 1x Panbar
- 1x used Panther Husky Dolly Set
- 1x used rails for the Panther Husky Dolly
- 3x used Panther heavy duty tripod systems

Equipment is in very good condition
Regularly serviced and immediately available
Original price of the equipment was EUR 75.000,00

All parts are also separately available

Please see equipment list on the next pages!



Price on request:

Excluding VAT

Excluding shipping and insurance costs

Excluding custom fees

Technical specifications of the Panther Pixy Crane Version 7:

Type of crane:

1x Panther Pixy Crane version 7 / 9,5m length from the middle of the tripod
(can be used as Jib in version 1 to Version 7 in mutable ways) including
1x alternative teflon spinning sliding doors tripod head
1x Monitor holder 1402421
1x push weight 139702
1x lever rod 137363 (no photo attached)

Available adapter:

1x Pixy adapter for Euro mount 139313

Bags:

4x snowboard transport bags for easier transport in the mountains

Weight of the Panther Pixy Crane:

31kg net weight

Payload:

25kg

Weights - round und rubberised – not included - available separately:

4x 5kg

4x 10kg

10x 20kg

4x Panther weights 17,5kg per piece

Please note that the crane doesn't have the plus option – the only difference is the inflexible mid-level spreader on the crane tripod

Technical specifications of the Panther Trixy 3 axis remote head:

Type of the Panther Trixy 3 axis remote head:

1x Panther Trixy 3 axis remote head with board extension with stabilisation / lifting capacity up to 20kg

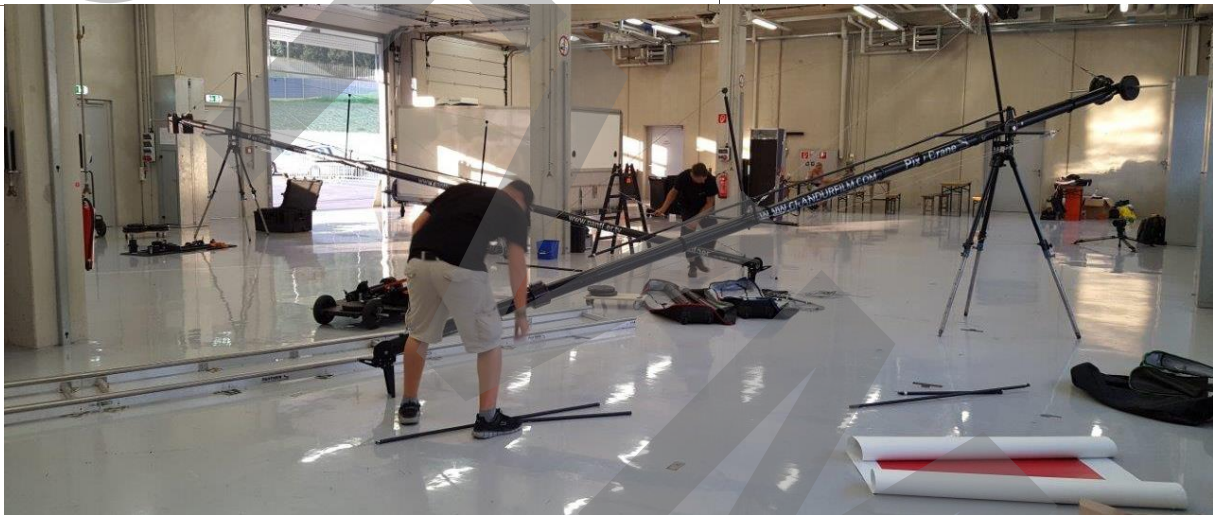
Included parts of the remote head:

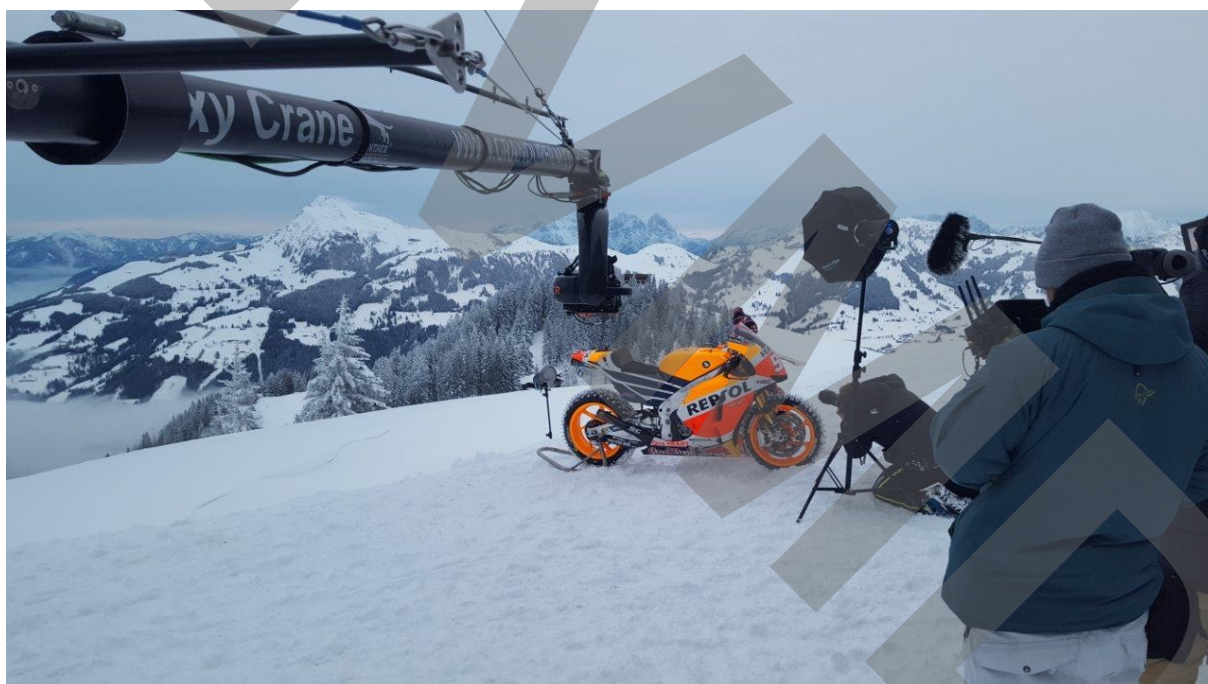
1x Trixy Flight case (2x Inlay, one is completely new, only one is on the pictures)
1x Multicore cable circa 15 metres up to 18 meters
1x Panther Panbar with V-Mount adapter for power supply
1x Panbar counterbalance
1x Panther Panbar Flight case
1x Zoom motor
1x Focus motor
1x Iris motor
2x Motor Rods
1x CPU Box
1x Zoom Handle

FOR SALE: Used Panther Broadcast Setup – All parts are also separately available

- 1x Zoom Handle Control Cable
- 1x Control Handle
- 1x Control Handle Control Cable
- 1x Base Handle
- 1x Start/Stop Broadcast Cam (for ex. for Sony PDW 700/800 with Fujinon lenses)
- 1x Lenscontrol Broadcast (zB. Canon / Fujinon lenses)
- 1x Lenscontrol Cable
- 1x Powercable for 12V on remote head
- 1x SDI Cable Remotehead
- 1x Lemocable Remotehead (Arri, connection)
- 2x Handle extension (li/re)
- 12x lens gears of 0,4/0,5/0,6/0,8

Photos of the crane and the remote head:







**Panther Pan Bar
with V-Mount
adapter for power
supply**

Technical specifications of the Panther Husky Dolly Set:

Coming with:

1x 2-step Bazooka

1x 1-step Bazooka

Payload:

Payload of the Bazookas: 100kg

Payload of the Panther Husky Dolly: 250kg in total

Size of the platform:

80x 117x 27cm

Included parts of the Panther Husky Dolly Set:

1x Panther Husky Dolly Platform

1x Panther Bazooka with gas pressured spring - 1 section

1x Panther Bazooka with gas pressured spring - 2 sections

4x 2 axle-railwheels soft

4x Hard rubber wheels / studio wheels (without storage, suitable for the crane platform)

6x Airwheels with bearing

1x Slide rod for the rails

1x Crane axle kit for Panther Pixy Crane as camera platform

1x 100mm Bowl

1x 150mm Bowl

1x Tulip

1x Side boom - short

1x Broadcast turnstile (for one seat)

1x Seat support

1x Seat extension

1x Screw-Set for Dolly

1x Panther Flightcase

Tripod heads are not included – available on request

The Panther Husky Dolly Set was built in 2008

Photos Panther Husky Dolly Set:



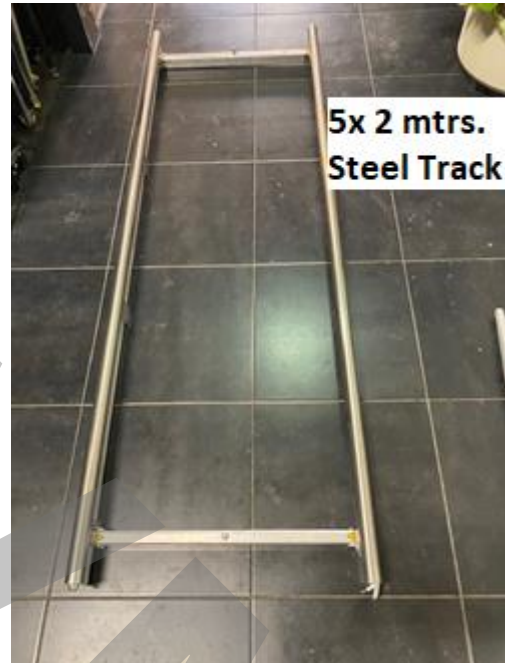
Technical specifications of the Panther Rail Set:

Included parts of the Panther Rail Set:

5x 2mtrs. Panther Precision Steel Track

4x Curve Panther Precision Steel Track 4,8 mtrs. curve radius

The Panther Rail Set was built in 2010



Technical specifications of the Panther Heavy Tripod Set – All Tripods are separately available

Included parts of the Panther Heavy Tripod Set:

Small Size Tripod System:

Height: 36.5 cm
Payload: 90-100 kg
Weight: 5.2 kg

Middle Size Tripod System:

Height: 64 cm
Payload: 90-100 kg
Weight: 6.4 kg

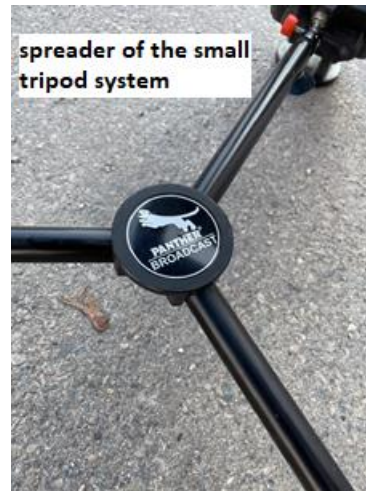
Big Size Tripod System:

Height: 105 cm
Payload: 90-100 kg
Weight: 7.5kg

All tripod systems are 1- section systems and have a 150mm bowl.
The tripod systems are indestructible.







For further information please contact:

sports tv media
distribution

Otmar Valzachi
sports tv media distribution GmbH
Paradeisergasse 9
9020 Klagenfurt, AUSTRIA
Tel:+43 463 908000
Fax:+43 463 908000 99
Mobile:+43 676 848606211

email: ov@stvmd.com
<http://www.stvmd.com>