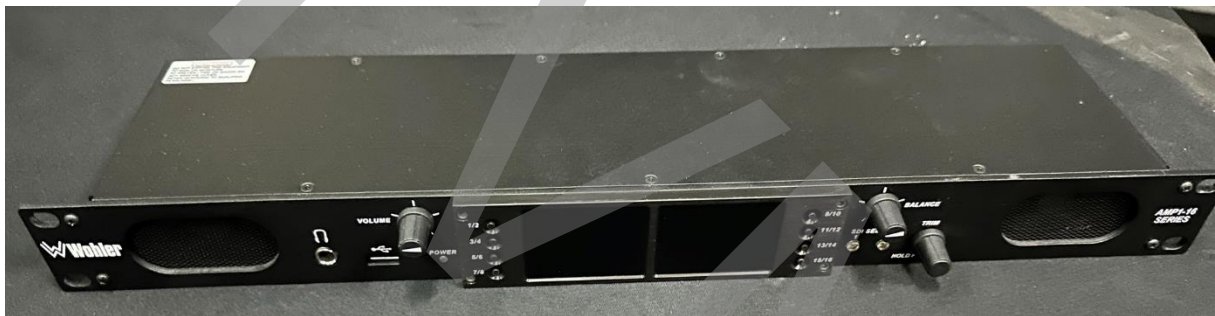


**FOR SALE**

**1x ex-demo Wohler 3G / HD / SDI Audio Monitor  
AMP 1-16-M Series**

**Simultaneous level metering of 16 de-embedded audio channels  
2x 3G/HD/SDI Inputs on BNC  
2x 2,4" LCD Screens**

**Built in May 2014  
Equipment is in top condition and only rarely used**



**Price on request:**

Excl. VAT

Excl. shipping & insurance costs

Excl. custom fees

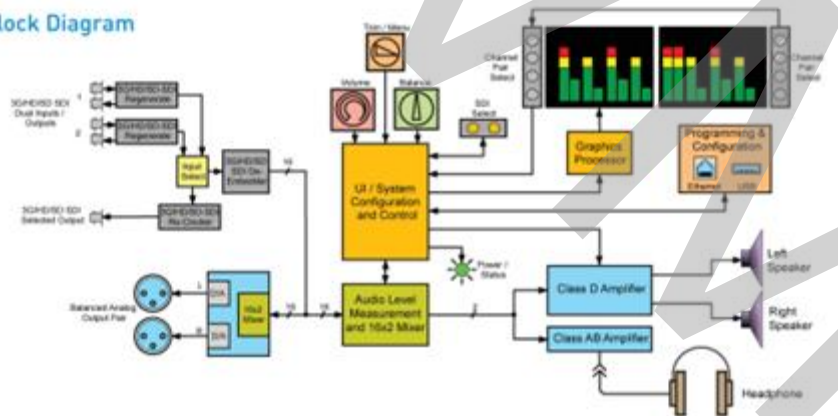
**Technical Specification:**

- Simultaneous level metering of 16 de-embedded audio channels from SDI
- High resolution metering with 166-segment displays
- Quick, intuitive push-button selection of any pairs to sum to monitor
- Monitor through built-in speakers, headphones or analog outputs with optional muting for internal speakers
- Stereo or mono monitoring
- Stereo phase indicators
- Adjustable Volume and Balance
- Adjustable Channel Trim
- Easy update and management software for PCs
- Balanced stereo analog outputs on XLR-Ms. Fixed level or volume/balance controlled.
- Automatic frame rate detection and selection
- Totally digital system architecture with high fidelity Class D amp
- Selectable line level or front panel volume control and outputs
- Shallow chassis depth for easy installation in OB vehicles and consoles

**Rear Panel**



**Block Diagram**



**Preliminary Specifications**

Inputs	Two 3G/HD/SD-SDI Inputs on BNC
Outputs	Two loop-through SDI Outputs on BNC Selected SDI Re-clocked Output on BNC Balanced stereo analog out on XLR-M
Interfaces	External PC control via Ethernet port Front panel USB port for preset storage/transer
Front Panel Displays	Two 2.4" LED-backlit LCDs
Level Metering	Simultaneous average and PPM
Acoustic Frequency Response	150 Hz to 16 kHz (+/- 5 dB) acoustic • 40 Hz to 20 kHz (+/- 1dB) electrical
Peak Acoustic Output	90 dB SPL at 2 feet
Power Output	6 W RMS per side, 12 W peak
Hum and Noise	Better than -68 dB below full output
Power	IEC connector 100 to 240 VAC ± 10%, 50/60Hz 60 W; self-contained power supply
Dimensions (W x H x D)	4.25" x 19" x 1.75" (108 mm x 483 mm x 44 mm)
Shipping Weight/Net Weight	7 lbs (3.2 kg) / 5 lbs (2.8 kg)

Pictures of the equipment:



sports tv media  
distribution

Paradeisergasse 9 • 9020 Klagenfurt, Austria  
Tel.: +43 463-90 8000 • Fax: +43 463-90 8000-99  
e-mail: stvmd@stvmd.com • <http://www.stvmd.com>



[For further information please contact:](#)

sports tv media  
distribution

Otmar Valzachi  
sports tv media distribution GmbH

Paradeisergasse 9  
9020 Klagenfurt

AUSTRIA

Tel:+43 463 908000  
Fax:+43 463 908000 99  
Mobile:+43 676 848606211  
email: [ov@stvmd.com](mailto:ov@stvmd.com)  
<http://www.stvmd.com>