

FOR SALE

Used HD SNG -full redundant - Mercedes Sprinter 516 CDI prepared for 4 CCU controlled Camera chains

This SNG is in excellent condition and prepared on a high technical level
ready for upgrade to 4K
The SNG can do 2+1

The SNG was built in 2017

Emission Norm EURO 6

Dimensions (L x W x H): 7,00 x 2,50 x 3,60 m

Maximum weight: 5,5 Tons

Air Conditioning

Navigation System

10 KVA Panda on board Power Generator

External Power Supply via CEE Connector, 16 A

UPS System Protect D-3000

Electrical controlled jacks on front and rear side

Room capacity -production gallery:

3 people in the front

1x extra folding table behind the main table (for EVS, Graphic, Journalist)

Satellite equipment:

1.5 m ERA-Antenna

2 x 400-Watt ND Satcom HPAs-12.75 – 14.50 GHz

EIRP max. 71 dBW

2 x Upconverter-13.75 – 14.50 GHz,

2 x HD Encoder/Modulator ERICSSON VOYAGER II, MPEG2, MPEG4,

RAS and BISS-Encryption, QPSK, 8PSK, DVB-S2

2 x IRD ERICSSON RX8200, MPEG 2, MPEG 4, HD/SD

1x Adtec R-60

Spectrum Analyzer JFR2399

Digital Astra TVRO, 10.70 – 12.75 GHz

Video-Audio equipment:

All video cabling is prepared in 12G

Video Switcher ATEM 2 M/E Production Studio 4K

SDI Router Blackmagic Smarhub 40x40, 12G -4K

4x SDI Embedder, 4x SDI Deembedder, 1x Cross-Converter, TC-Generator

Recorder Blackmagic HyperDeck Studio / Studio Mini

Audio Mixer Soundcraft Si Impact, 32 Inputs, 16 Outputs
Audio Stagebox Soundcraft Mini 16i, 16 Inputs, 8 Outputs (option)
Riedel Riface – 1x Simplex + 1x Duplex
2x Motorola Walkie Talkies
Riedel Performer Intercom -32x32 Mainframe
Dolby E Decoding
n-1 and intercom via GSM-Hybrid, Telephone Hybrid
ISDN Codec Mayah 3001



SNG facts:

The SNG is in excellent condition and is full redundant
Very solid Chassis and – built in Germany
Professional uplink and broadcast technology with corresponding redundancies
» one-room concept
All video cabling in 12- ready for to upgrade in 4K
EBU approved
Prepared for 4 CCU controlled camera chains

Satellite equipment:

All waveguides and tubes are in excellent condition

Condition of the vehicle:
Overall very good condition

Technical specifications of the HD SNG:

Vehicle information:

Mercedes Sprinter 516 CDI

Emission standard:

EURO 6

Navigation system:

Integrated navigation system

First registration:

January 2017

Mileage:

89.400 KM

TÜV/MOT valid until:

May 2027

Measurements vehicle:

L x W x H: 7,00 m x 2,50 m x 3,60 m

Maximum + actual weight of the Trailer:

Maximum weight: 5.500 kg

Current weight: 5.100kg

Power System 16 Ampere CEE

16A CEE

Power generator:

10 KVA Panda onboard diesel generator (486 running hours)

UPS system:

Protect D3000 -

Integrated UPS for critical broadcast equipment – duration approx.. 10' under full production setup

Vehicle stabilisation:

Electrically controlled support jacks at front and rear

A HPC jacks control unit is installed

Air condition – Dometic + Truma:

1xDometic

1x Truma

Standheating:

Webasto Stand heating system is installed

Floorheating:

Alro floor heating system is installed

Awning:

Manual Awning above the entrance area

Satellite Equipment:

Antenna:

1.5m AVL Antenna mount with ERA (Cobham) diamond shape reflector

Satellite performance:

Maximum EIRP: 71 DBW

Satellite reception:

Eutelsat CAM slot for conditional access module

LNB configuration:

1x LNB crosspol Low- & Highband

1x LNB copolar Low-Band

Co-polarized LNB allows simultaneous transmission and reception on the same transponder

Antenna -downlink:

1x Kathrein CAP 950 Mobisat -Transmare - for to receive TV-programmes is installed

SNG configuration:

2+1 transmission configuration possible

Maintenance on the Antenna:

Antenna Mount was renewed in 2015

Hydraulic absorber were changed in 2024

Satellite registrations:

Eutelsat D-265

Intelsat D00180K2

Waveguides and tubes:

1x WGSU waveguide switch – enables interference free signal transmission between the 2 HPA's

Maintenance -free wave guides are installed, because swivel joints are used on the folding mechanism.

Antenna controller:

Research Concepts Inc. RC2500 Satellite Antenna Controller

HPA 1:

ND Satcom 400 W outside HPA 3412B Ku

12,75 – 14,50 GHz

Helix Current: 0.7 mA

Measurement was done on 342 Watts output power:

HPA 2:

ND Satcom 400 W outside HPA 3412B Ku

12,75 – 14,50 GHz

Helix Current: 2.4 mA

Measurement was done on 370 Watts output power:

HPA Controller -redundant:

2x ND Satcom HPA Control Unit HPA E200 A

Redundancy switch:

IB-A redundancy switch

Used HD SNG Mercedes Sprinter 516 CDI prepared for 4x CCU controlled Cameras

Encoder -HD 1080i:

3x Tandberg Encoder / Modulator: Voyager II ; 4:2:2 – 4:2:0 – QPSK, 8PSK - DVB-S2

RASS + BISS Encryption

All Encoders have 2x IF outs – main and monitor and 2x L-Band-output - on the SNG, there the IF main connected with the Ghilmetti Video/Audio Matrix

4xAnalog Audio or 4x AES EBU Stereo (8 channel) for each Encoder

Decoder -HD 1080i:

2x Ericsson RX8200 Decoder; 4:2:2

1x Adtec RD-60

Digital Astra TVRO, 10,70 -12,75 Ghz -Elium Slot for CA Modul available

Upconverter:

Nortel Dasa Upconverter ND30/Ku

Signal splitter:

3x Global Communications Split 4AF

BISS:

Single BISS Modes 0,1 and BISS E encryption - expansion licenses not included

Measurement Equipment:

Spectrum Analyzer:

1x IFR2399

TV receiving system:

Digital Astra TVRO

10.70 – 12.75 GHz

Satellite Receiving Matrix:

There is a Matrix – low and high band are patched to the IRF inputs

Video production:

Videomatrix:

Blackmagic 40 x 40 Studio -12G -4K Videohub -Videomatrix

Video router signals fully available connected to the Video patch field

Videomixer:

Blackmagic Design ATEM 2 M/E Production Studio 4K video switcher

1x Blackmagic 1ME advanced panel

Camera infrastructure:

The SNG is pre-wired for 4 CCU-controlled camera chains

No SMPTE patch panel available

Cameras can be connected directly to the CCU's

6 slots for RCP's are available

There is enough space for up to 6 CCU's

Video infrastructure:

All video cabling prepared for 12G-SDI operation

Ready for future 4K/UHD upgrade

Used HD SNG Mercedes Sprinter 516 CDI prepared for 4x CCU controlled Cameras

SDI processing:

4 x SDI embedders
4 x SDI de-embedders
1 x SDI cross converter
Timecode generator

Recording SSD +SD cards:

Blackmagic HyperDeck Studio
Blackmagic HyperDeck Studio Mini

EVS connections to the Videomatrix and Audiomixer available:

6x Video
4x audio
4x Cut 5

Signal generation:

Lynx Testor colour bar generator

Monitors in the production Gallery:

1 x Samsung 4K monitor
3 x Lilliput 4K monitors
1 x Sony Trimaster EL 36" monitor
1 x Blackmagic 36" monitor

Video distribution Amplifier:

1x Lynx 5000 Videodistribution Amplifier
Cards: 8x D VA5110 Videodistribution Amplifier
Redundant PSU

Streaming unit:

Wirecast Gear streaming system included

Video -System control:

Server:

Dell PowerEdge 750 Server

Measurement Equipment:

1x Lynx Testor HD/SD SDI& AES Test Generator

Audio/Video Patch panels:

Ghielmetti Audio Blue line analogue patch field
GVP 2x32 A

Audio infrastructure:

Audio mixer:

Soundcraft Si Impact equipped with MADI interface card
MADI connection via fibre link to rear patch field
32 inputs / 16 outputs
Soundcraft Stagebox not included - on request

Used HD SNG Mercedes Sprinter 516 CDI prepared for 4x CCU controlled Cameras

Audio interfaces:

4 x analogue audio channels or
4 x AES/EBU stereo pairs (8 channels)
Audio processing:
Dolby E decoding

Audio monitoring:

Wohler Technologies Audio-Monitor
RTW Peakmeter TM3

Active Loudspeakers:

2 x Genelec 8010 active monitors

Audio distribution:

2x Sonifex Redbox RB - DA 4x5 grouped output mixer&DA

Intercom and communications:

Intercom system:

Riedel Performer 32 x 32 matrix
2 x Onelope interfaces
1x AES interface
1x VoIP interface
1 x Riedel RCP-1028 panel
3 x Riedel RCP-1012 panels
4 additional connections for external RCP panels through CAT5 cabling
2 RCP Panels are pre-wired for external connections (i.e. to OB Vans etc.).

Pre-listening:

2x Blackmagic Pre-listening outputs – 1x with Headset connection

External communications:

3x Sonifex DHY 04G
GSM hybrid for N-1 and intercom applications -Telephone hybrid

Communications -Walkie Talkie:

2 x Motorola handheld radios
Riedel RiFace radio interface
1 x simplex channel
1 x duplex channel

Microphones and headsets included:

Wireless and wired Sennheiser microphones
2 x Sennheiser MD46 reporter microphones
1 x Sennheiser HME25-1 headset

ISDN Codec:

1xMayah Centauri III – 3001 ISDN Codec

sports tv media distribution

Paradeisergasse 9 • 9020 Klagenfurt, Austria
Tel.: +43 463-90 8000 • Fax: +43 463-90 8000-99
e-mail: stvmd@stvmd.com • <http://www.stvmd.com>

Dolby E Decoding:

Dolby E Decoding through Harris Rasterizer possible

No Encoder/Decoder included

Listening only

Audio/Video Patch panels:

Ghielmetti Audio Blue line analogue patch field

GVP 2x32 A

Power -Video -Audio Cables included:

1x50mtr. power cable

1x 60 mtr. 3 times Video SDI

1x 110mtr. AES cable

Extras

Spare wheel

Tool bag

Box of various cables

Box of assorted connectors

Rear side of the SNG:

Audio/Video/Network patchfield

10x KVA panda generator

Power-video-Audio cables

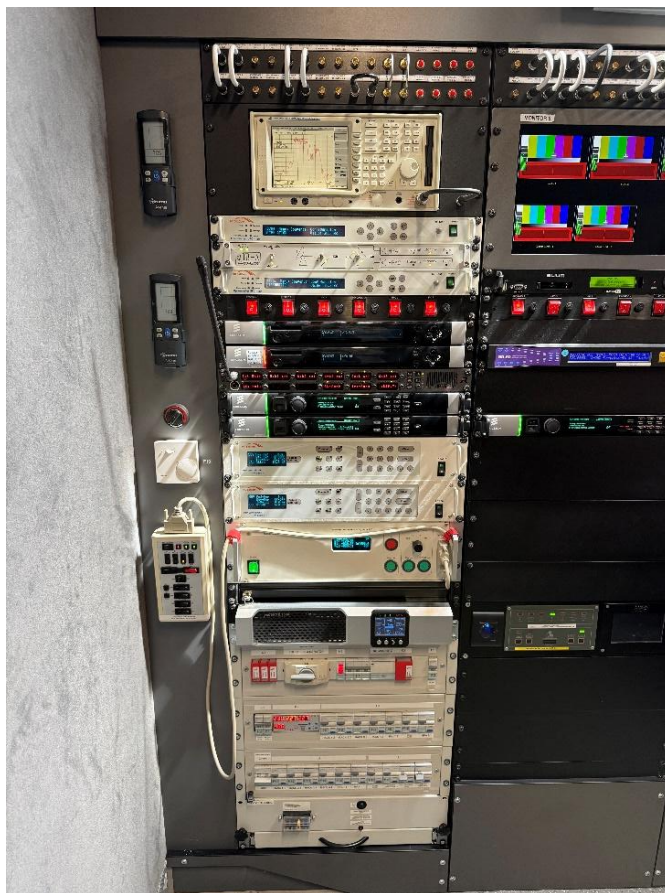
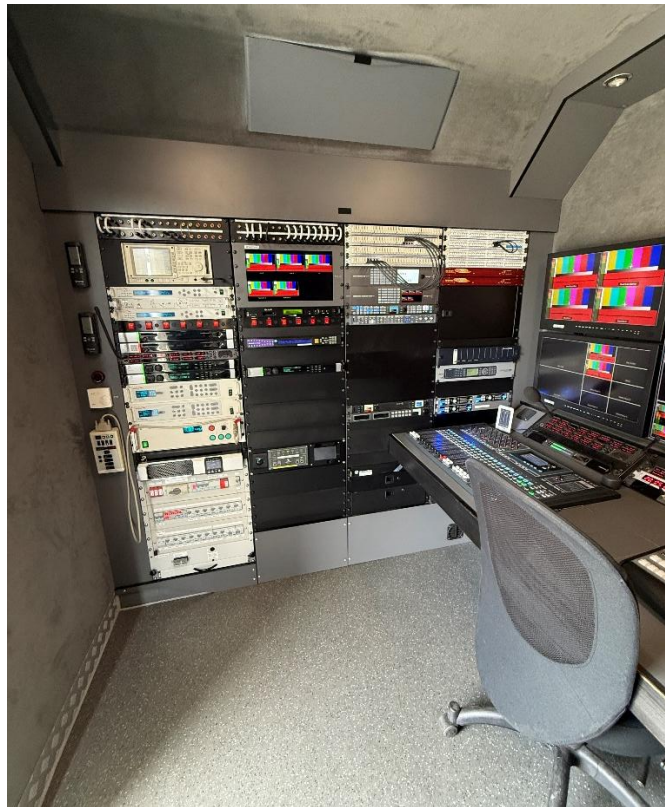
Storage

Pictures inside the main room:



sports tv media
distribution

Paradeisergasse 9 • 9020 Klagenfurt, Austria
Tel.: +43 463-90 8000 • Fax: +43 463-90 8000-99
e-mail: stvmd@stvmd.com • <http://www.stvmd.com>

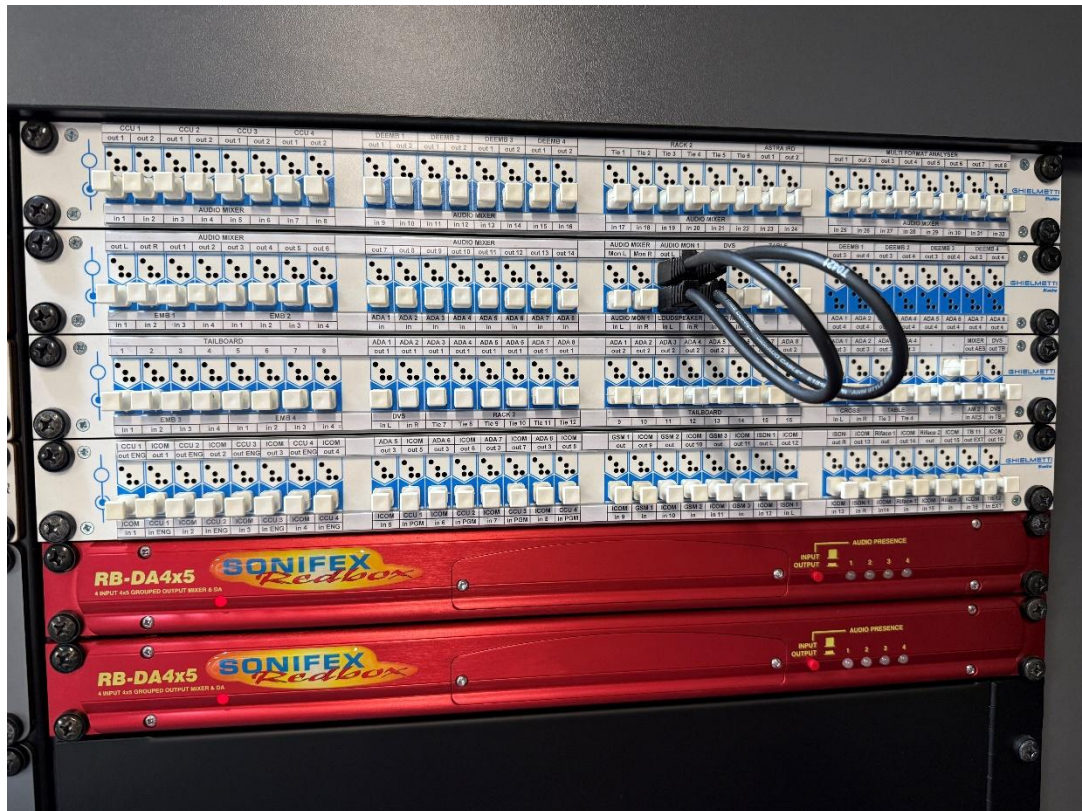
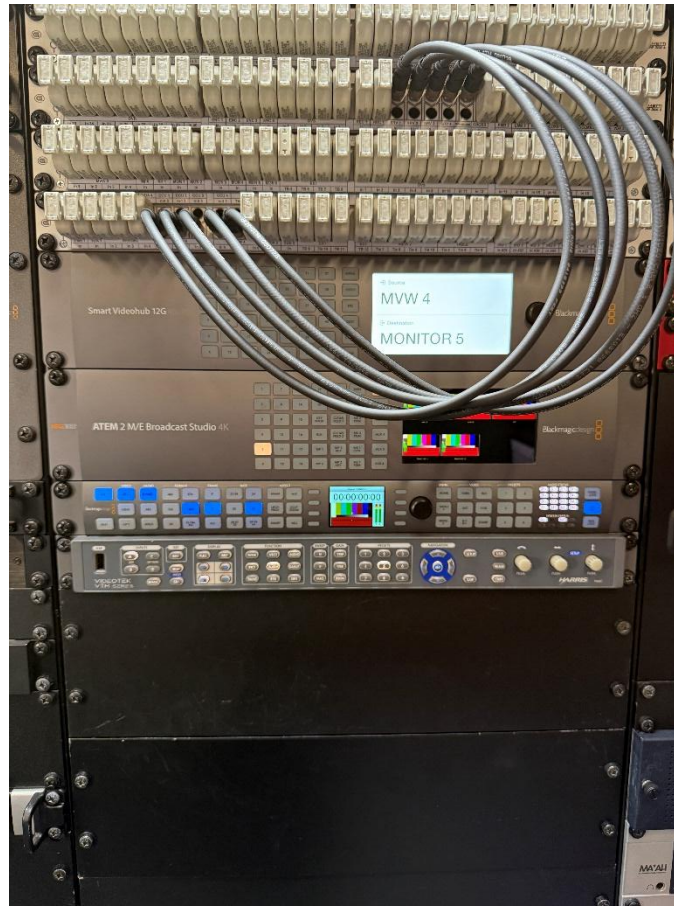


Used HD SNG Mercedes Sprinter 516 CDI prepared for 4x CCU controlled Cameras



sports tv media distribution

Paradeisergasse 9 • 9020 Klagenfurt, Austria
Tel.: +43 463-90 8000 • Fax: +43 463-90 8000-99
e-mail: stvmd@stvmd.com • <http://www.stvmd.com>



Used HD SNG Mercedes Sprinter 516 CDI prepared for 4x CCU controlled Cameras

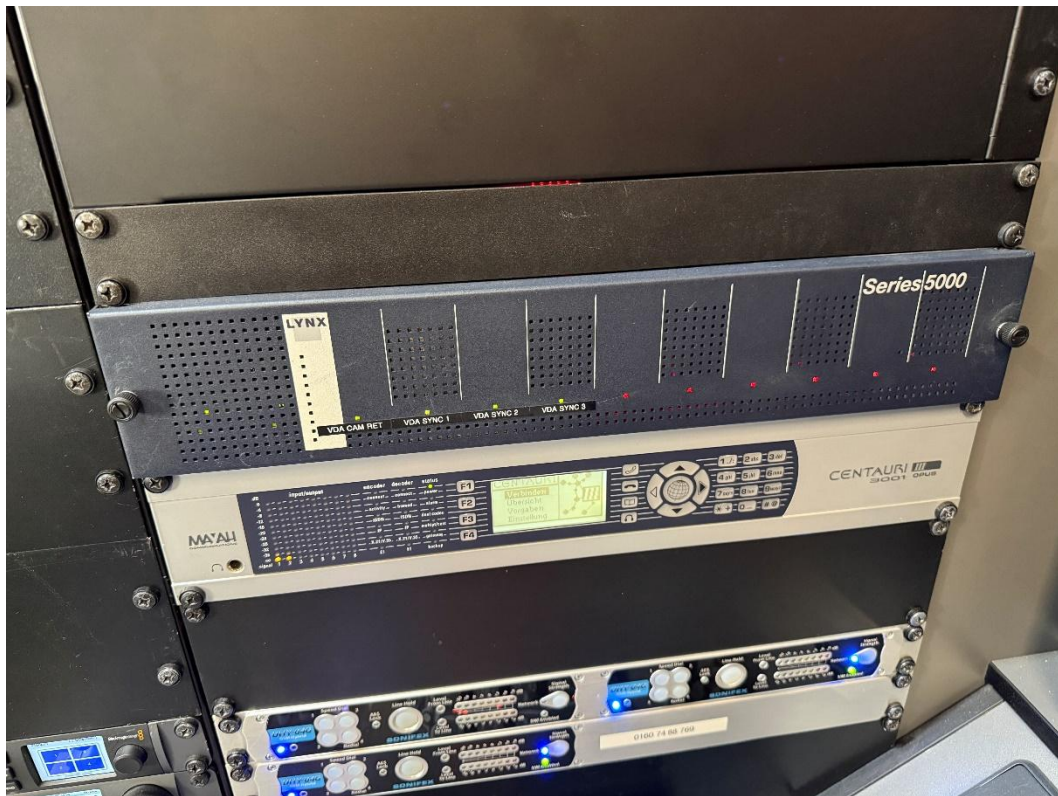
sports tv media distribution

Paradeisergasse 9 • 9020 Klagenfurt, Austria
Tel.: +43 463-90 8000 • Fax: +43 463-90 8000-99
e-mail: stvmd@stvmd.com • <http://www.stvmd.com>

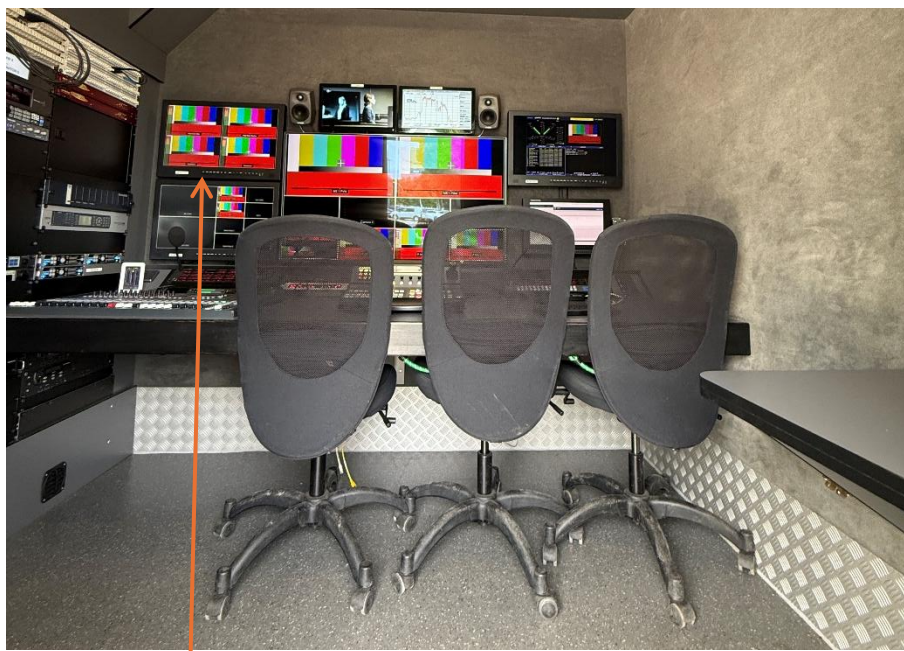
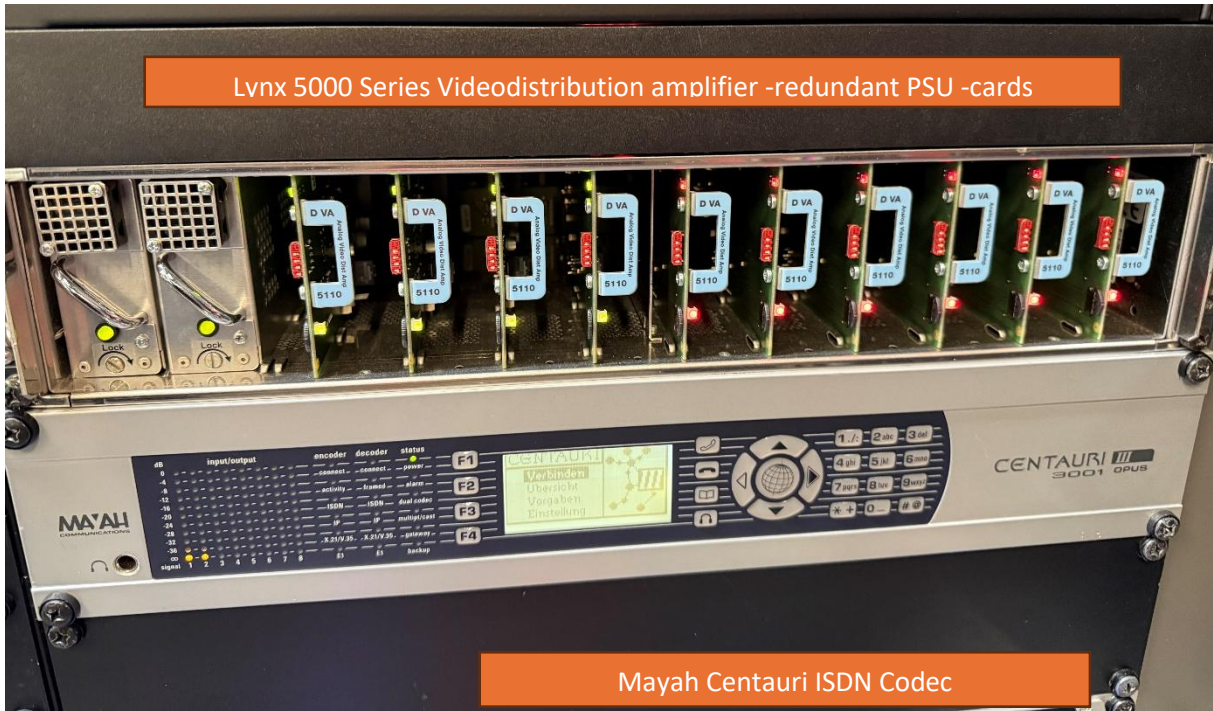
Connections for:

Embedder -De-embedder -distribution
amplifier -Tally-Interface -Blackburst -
Multiviewer

All connections are marked



Used HD SNG Mercedes Sprinter 516 CDI prepared for 4x CCU controlled Cameras



sports tv media distribution

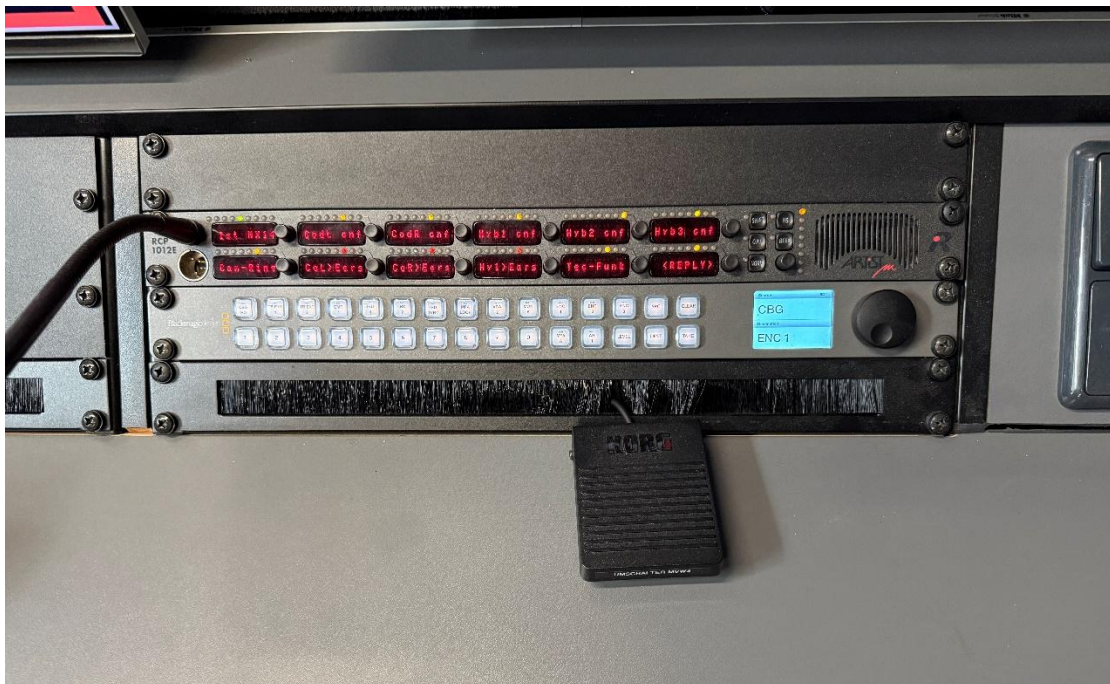
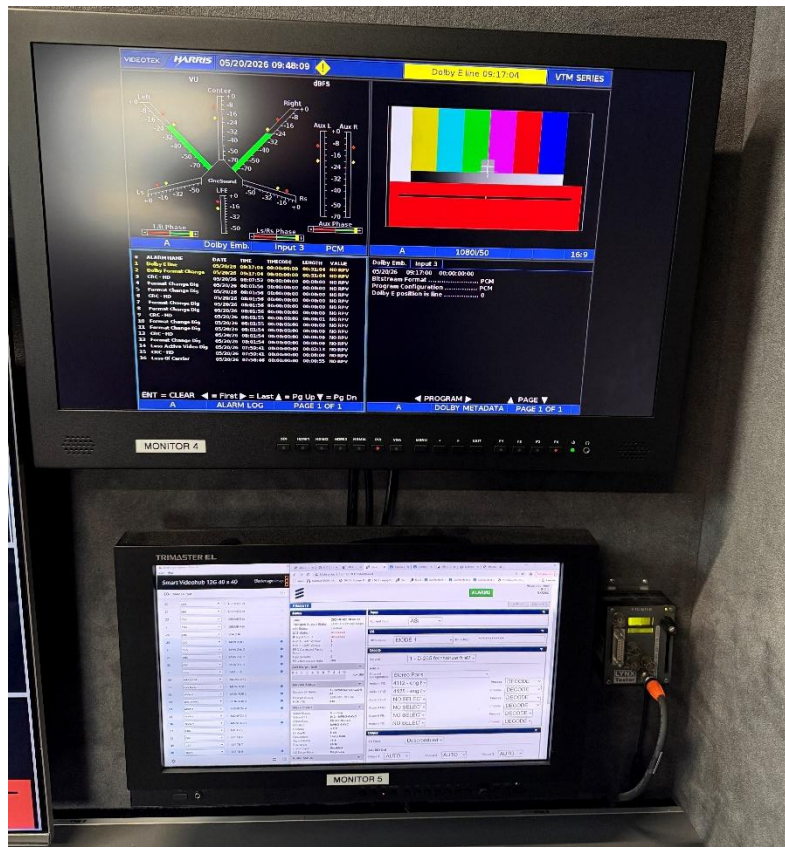
Paradeisergasse 9 • 9020 Klagenfurt, Austria
Tel.: +43 463-90 8000 • Fax: +43 463-90 8000-99
e-mail: stvmd@stvmd.com • <http://www.stvmd.com>



Used HD SNG Mercedes Sprinter 516 CDI prepared for 4x CCU controlled Cameras

sports tv media distribution

Paradeisergasse 9 • 9020 Klagenfurt, Austria
Tel.: +43 463-90 8000 • Fax: +43 463-90 8000-99
e-mail: stvmd@stvmd.com • <http://www.stvmd.com>



Used HD SNG Mercedes Sprinter 516 CDI prepared for 4x CCU controlled Cameras

sports tv media distribution

Paradeisergasse 9 • 9020 Klagenfurt, Austria
Tel.: +43 463-90 8000 • Fax: +43 463-90 8000-99
e-mail: stvmd@stvmd.com • <http://www.stvmd.com>



Blackmagic advanced Videopanel -20inputs -10x direct



Soundcraft SI Impact Audiomixer

Used HD SNG Mercedes Sprinter 516 CDI prepared for 4x CCU controlled Cameras

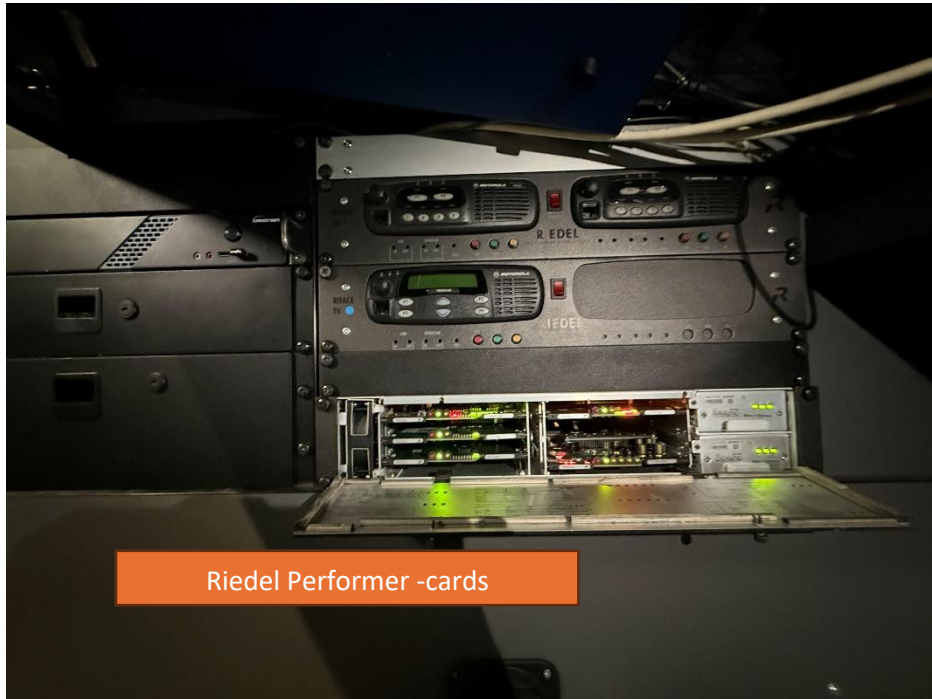
sports tv media distribution

Paradeisergasse 9 • 9020 Klagenfurt, Austria
Tel.: +43 463-90 8000 • Fax: +43 463-90 8000-99
e-mail: stvmd@stvmd.com • <http://www.stvmd.com>



Motorola Rifaces + Riedel Performer Matrix -under the table
-production gallery

Used HD SNG Mercedes Sprinter 516 CDI prepared for 4x CCU controlled Cameras



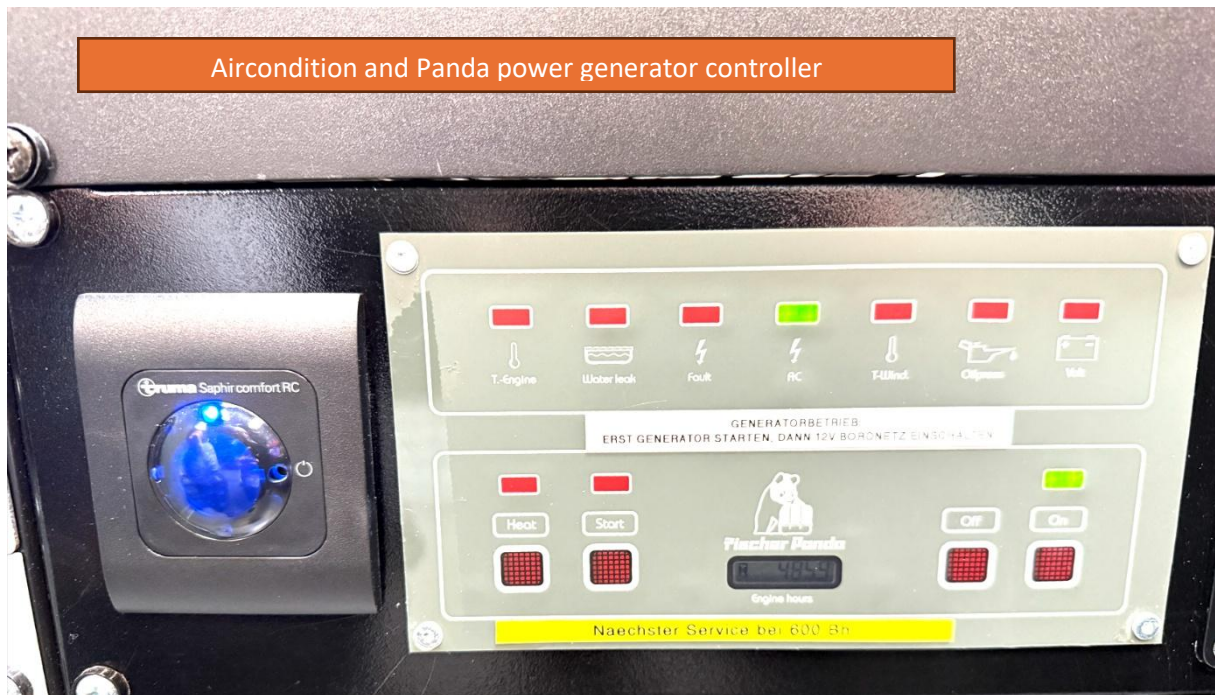
Riedel Performer -cards



Truma aircondition







Outside Pictures of the HD SNG:



Used HD SNG Mercedes Sprinter 516 CDI prepared for 4x CCU controlled Cameras

sports tv media
distribution

Paradeisergasse 9 • 9020 Klagenfurt, Austria
Tel.: +43 463-90 8000 • Fax: +43 463-90 8000-99
e-mail: stvmd@stvmd.com • <http://www.stvmd.com>



Used HD SNG Mercedes Sprinter 516 CDI prepared for 4x CCU controlled Cameras

sports tv media
distribution

Paradeisergasse 9 • 9020 Klagenfurt, Austria
Tel.: +43 463-90 8000 • Fax: +43 463-90 8000-99
e-mail: stvmd@stvmd.com • <http://www.stvmd.com>



Used HD SNG Mercedes Sprinter 516 CDI prepared for 4x CCU controlled Cameras

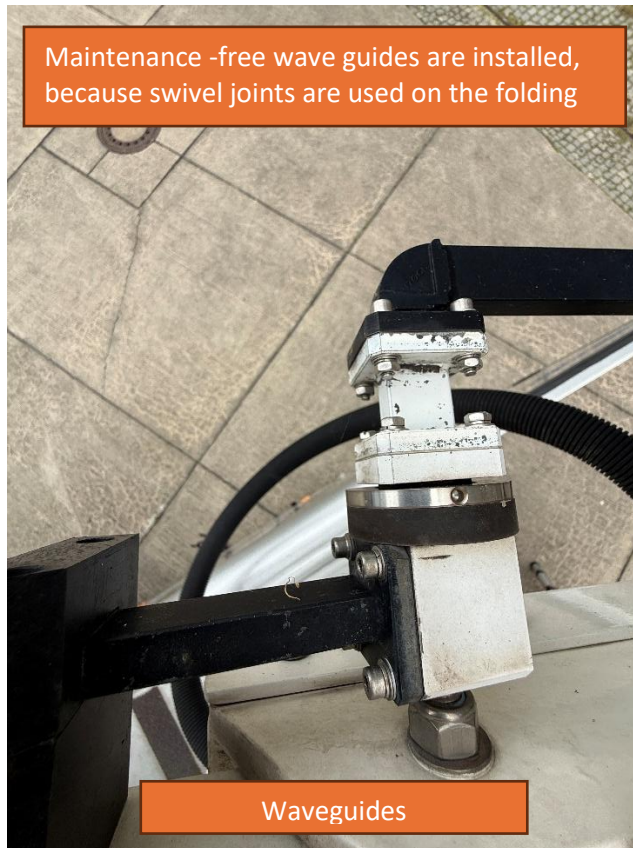


sports tv media
distribution

Paradeisergasse 9 • 9020 Klagenfurt, Austria
Tel.: +43 463-90 8000 • Fax: +43 463-90 8000-99
e-mail: stvmd@stvmd.com • <http://www.stvmd.com>



Maintenance-free wave guides are installed, because swivel joints are used on the folding



Waveguides

Used HD SNG Mercedes Sprinter 516 CDI prepared for 4x CCU controlled Cameras



Hydraulic absorber were changed in 2024



sports tv media
distribution

Paradeisergasse 9 • 9020 Klagenfurt, Austria
Tel.: +43 463-90 8000 • Fax: +43 463-90 8000-99
e-mail: stvmd@stvmd.com • <http://www.stvmd.com>



Used HD SNG Mercedes Sprinter 516 CDI prepared for 4x CCU controlled Cameras

sports tv media
distribution

Paradeisergasse 9 • 9020 Klagenfurt, Austria
Tel.: +43 463-90 8000 • Fax: +43 463-90 8000-99
e-mail: stvmd@stvmd.com • <http://www.stvmd.com>



Used HD SNG Mercedes Sprinter 516 CDI prepared for 4x CCU controlled Cameras

sports tv media
distribution

Paradeisergasse 9 • 9020 Klagenfurt, Austria
Tel.: +43 463-90 8000 • Fax: +43 463-90 8000-99
e-mail: stvmd@stvmd.com • <http://www.stvmd.com>

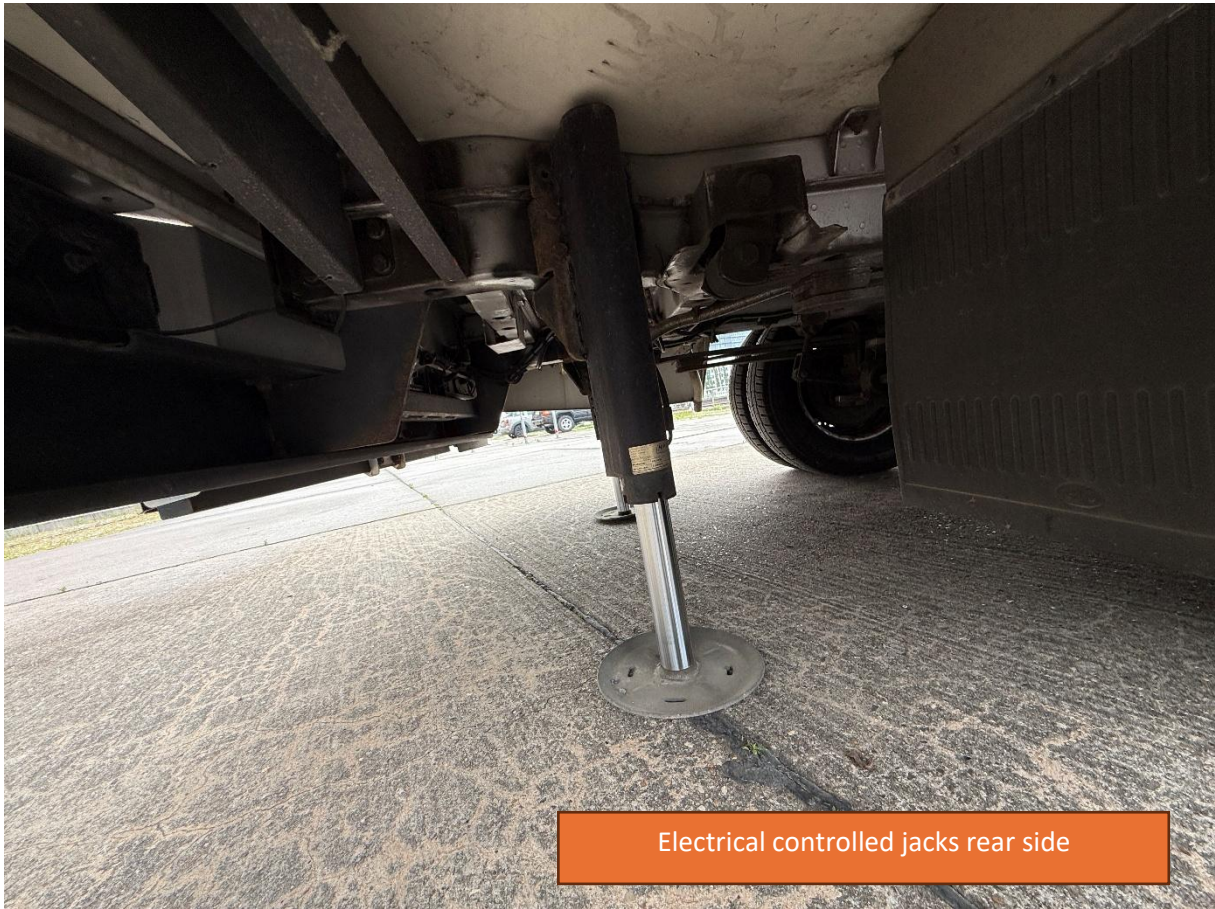


Used HD SNG Mercedes Sprinter 516 CDI prepared for 4x CCU controlled Cameras

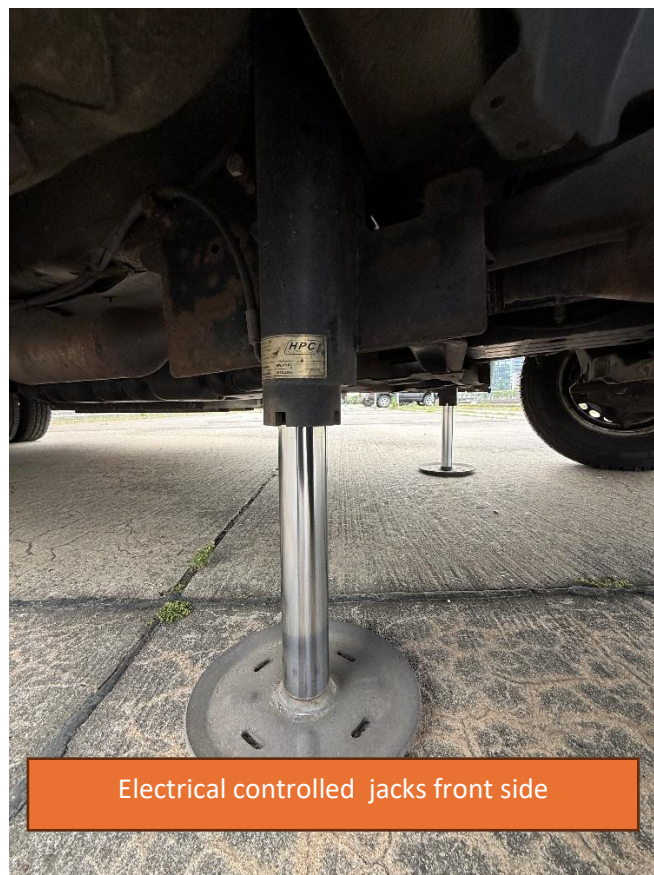
Pictures inside rear storage space:







Electrical controlled jacks rear side



Electrical controlled jacks front side



sports tv media
distribution

Paradeisergasse 9 • 9020 Klagenfurt, Austria
Tel.: +43 463-90 8000 • Fax: +43 463-90 8000-99
e-mail: stvmd@stvmd.com • <http://www.stvmd.com>

Price on request:

Excl. VAT

Excl. shipping & insurance costs

Excl. custom fees

For further information please contact:

sports tv media
distribution

Otmar Valzachi
sports tv media distribution GmbH
Paradeisergasse 9
9020 Klagenfurt, AUSTRIA
Tel:+43 463 908000
Fax:+43 463 908000 99
Mobile:+43 676 848606211

email: ov@stvmd.com
<http://www.stvmd.com>