

USED RACK READY HD OB TRUCK
MAN TGM 18.340 LL VARIO Perfect 1050
IN VERY GOOD CONDITION – AVAILABLE FOR SALE

The currently installed broadcast equipment will be removed
So the OB Truck will be sold as rack ready

Facts:

The OB Truck is in very good condition
The Chassis was built by VARIO Germany
The OB Truck was built in 2016
First registration in August 2016
Euro Emission Norm: EURO 6
The OB Truck is currently prepared for 5 camera chains
The OB Truck can be extended to up to 8-10 camera chains
Measurements: 10,55 x 2,55 x 3,8 mtrs. (L X W X H)
MOT is valid until September 2022

The OB has a special design – including an office/meeting area with toilet and pantry

Power System:

32Amp CEE

Air condition:

Daikin air condition with cooling up to 45 degrees Celsius outside temperature

Not included within the rack ready OB Truck – available on request:
**Video Mixer, Video Matrix, Audio Mixer, Intercom System, EVS servers, Camera chains,
Lenses, Tripods, Etc.**



Price on request:

Excl. VAT

Excl. shipping & insurance costs

Excl. custom fees

Short description of the OB Truck:

Special OB Truck that has been built for Church transmission with office/meeting area including toilet and kitchen area. At the moment the OB is prepared for 5 cameras, but the OB can be extended to 8-10 camera chains. The chassis is very massive and solid and in top quality. All furniture and surroundings are made in high quality.

Technical specifications of the OB Truck:

OB Tractor: MAN TGM 18.340 LL
Mileage of the OB Tractor: 82.000 km
Euro Emission Norm of the Tractor: Euro 6
Motor Power of the Tractor: 341 Horse Power
MOT certification of the Truck until: September 2022
First registration of the Truck: August 2016
Measurements Truck: 10,55 x 2,55 x 3,8 mtrs. (L X W X H)
Truck weight: 18.000 kg
Possible weight on the axle: Front axle: 8.000 kg Rear axle: 13.000 kg
UPS System: 1x UPS System for 20 minutes for camera 1+2 + Audio incl. switch As emergency power unit the engine of the MAN Truck can be used.
Power system: 32A CEE
Electrical controlled stabilizers: The OB Truck will automatically be stabilized through 4 hydraulic jacks.
Air condition System: Daikin Air condition system with 4 separate controllable indoor units and 1 outdoor unit with energy-saving inverter technology Air condition with cooling up to 46 degrees Celsius outside temperature Separated units for production area, sound area and meeting area
OB Alarm system: Ultrasonic alarm system with door and storage compartment contacts and living room interior surveillance – remote controlled and alarm reporting

Coach building of the Truck:

Fully insulated self-supporting body, torsion-resistant wall with thickness of 46 mm
Fiber cowl with tinted laminated windscreen
Driver's seat Sliding side window, tinted insulating safety glass
Fiber spoiler bumper, H4 headlights with additional high-beam headlights, DE fog lights
Mirrors heated and electrically adjustable with long arms forward with additional wide-angle mirror left/right, ramp mirror on the passenger side
Double floor system for storage space above the original frame or tank installation
Double entry step outside, electrically operated with switch/warning buzzer
All exterior storage compartments lined with needle felt, illuminated and heated
One-key system for storage compartment flaps and filler neck
Outside hatch locks with 2-point locking - gas pressure opener
Darkened/mosquito blinds for sliding windows
2x roof hood 400 x 400 mm with darkening, forced ventilation
Velour covering for seats
Insulating partition wall in the area of the sliding door system for the audio and video control room
Reinforcement frame for technical flaps, side wall for holding the gas pressure stand
All technical outer flaps approx. 1100 x 1750mm are with 2-point locking, gas pressure stand incl. lock (safety) equipped
More than forty LED 12V lamps ensure an even and adequate lighting in the rooms lighting
The storage spaces are equipped with more than ten 12V lights
Four LED reversing lights, embedded in the side walls, are switched on automatically when reverse gear is switched on

High level interior:

Interior made of furniture plywood with laminate on both sides - color: light grey
Push lock for doors and flaps
Floor covering: ball yarn, entry with step strips
Upholstery fabric: Micro fibre IMTEX Enduro
comfort driver's and front passenger's seat with integrated three-point belt, backrest with integrated Headrest, adjustable armrests, height and tilt adjustment, seat cushion depth adjustment
Wall cupboards with flaps all around
Roller blind box for insulated, electric roller blind for the windscreen
Table top with pedestal base and extendable by 400 mm with insert
L-bench with removable seat cushions with 2x three-point belts and some head cushions
Wardrobe with 2 doors, lockable with bar lock and with clothes rail
Various 230V plug-ins
Various 12V plug-ins
Radio with electronic roof antenna
32" LED TV monitor in the meeting room
Sound reinforcement via four loudspeakers

Pantry:

Base cabinet with laminate worktop and cutlery drawer
Base cabinet with door and shelf incl. coffee machine
Compressor fridge 110l with priority circuit 230V
Microwave with grill integrated in wall cupboard

Water tank:

Fresh water tank approx. 200 l and waste water/toilet tank approx. 200 l
Sewage system laid in HT pipes, drain slides for all tanks in the heated storage space
Pressure water pump 11 l/min, surge tank and filter

Heating system:

WEBASTO hot water central diesel heating Thermo 90 ST, heat output 9000/7200 W
Thermostatic control via VARIO LCD panel
Underfloor heating circuit in the conference room as well as in the production area and audio room with Return temperature limiter control
Additional wall heating convectors
Heated storage spaces
Engine heat exchanger for heating system (heating via waste heat from the engine)

Room concept OB:

The OB Truck has 3 independent rooms.
Room 1 is the soundproof audio gallery with 1 or 2 working spaces.
Room 2 is the production gallery with 3 working spaces.
Room 3 has up to five multifunctional workstations, including three places with rotating Pilot seats, and with all motorhome typical benefits with enough spare and comfort.
In addition a bathroom incl. toilet is also integrated in the OB Truck.

Possible changes of the room layout:

Videomatrix and Videomixer:

We recommend to use a system – Videomixer and Videomatrix in one system.

Change of the room layout:

We recommend to move the main production gallery to the “office area”, so there would be more space and also more distance to the Videowall.
The toilet can be removed there.
In this area there is also space for a 02nd row for EVS or Graphic.
The existing video gallery can be used as Vision control and glue equipment area.
There is enough space for EVS/recording etc.

Audio room:

There is enough space, to use a big Audio Mixer.

Video/Audio cabling:

We recommend to do new cabling – to be ready for 4K.
The cabling is not a big issue, because of the short distances.

Space for EVS/Recording:

There is enough space, to store up to 3 EVS machines.

The OB chassis is high level German quality – the costs only for the chassis including air condition, power system and furniture were € 644.000,00.

Not included in the rack ready version of the HD OB Truck– available on request:

Camera chains, Lenses, Tripods, Video mixer, Video matrix, Audio Mixer, Intercom system, Camera cables, EVS servers, Recording machines etc.

Camera chains, lenses, tripods and triax cables that can be offered in addition – on request:

Camera chains – available on request:

3x used Sony HSC 100R camera chains incl. 7" Sony HD C730 View Finder

1x used Sony HXC 100 camera chain incl. 2" Sony HDVF-200 View Finder

Camera chains are consisting of:

5x Sony HSCU 300 CCU

4x Sony RCP 700

1x Sony RCP 1000

5x Adapter plate

5x Triaxcables with different lengths

5x Camera cases

5x lenses – available on request:

1x Fujinon HA 42x9,7 BERD-U48

2x Fujinon XA20sx 8,5BRD-S28

2x Fujinon XA20sx 8,5BRD-K3

Pictures of the OB Truck:



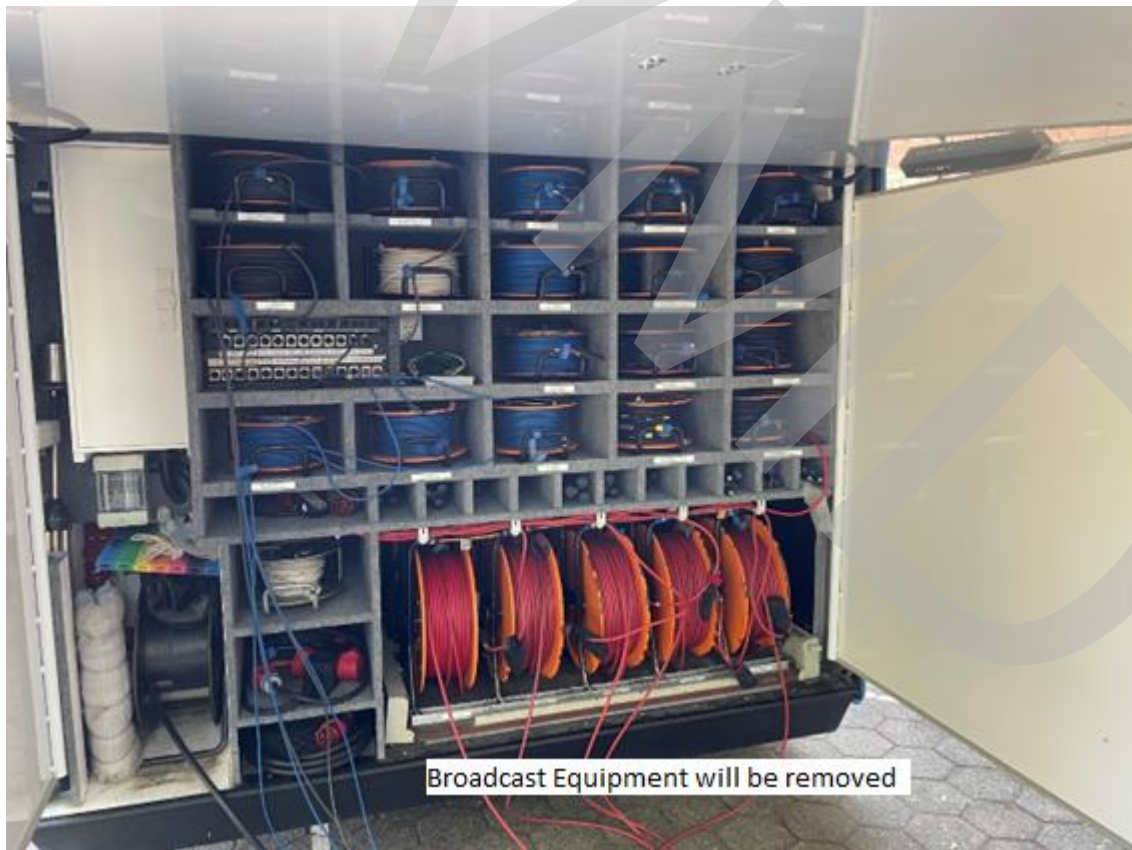
sports tv media
distribution

Paradeisergasse 9 • 9020 Klagenfurt, Austria
Tel.: +43 463-90 8000 • Fax: +43 463-90 8000-99
e-mail: stvmd@stvmd.com • <http://www.stvmd.com>



sports tv media
distribution

Paradeisergasse 9 • 9020 Klagenfurt, Austria
Tel.: +43 463-90 8000 • Fax: +43 463-90 8000-99
e-mail: stvmd@stvmd.com • <http://www.stvmd.com>



Production Gallery:

We recommend to use this room as Vision control/Glue equipment area



Audio Gallery:

There is enough space, to use a big Audio Mixer.



Pictures drivers and meeting area:



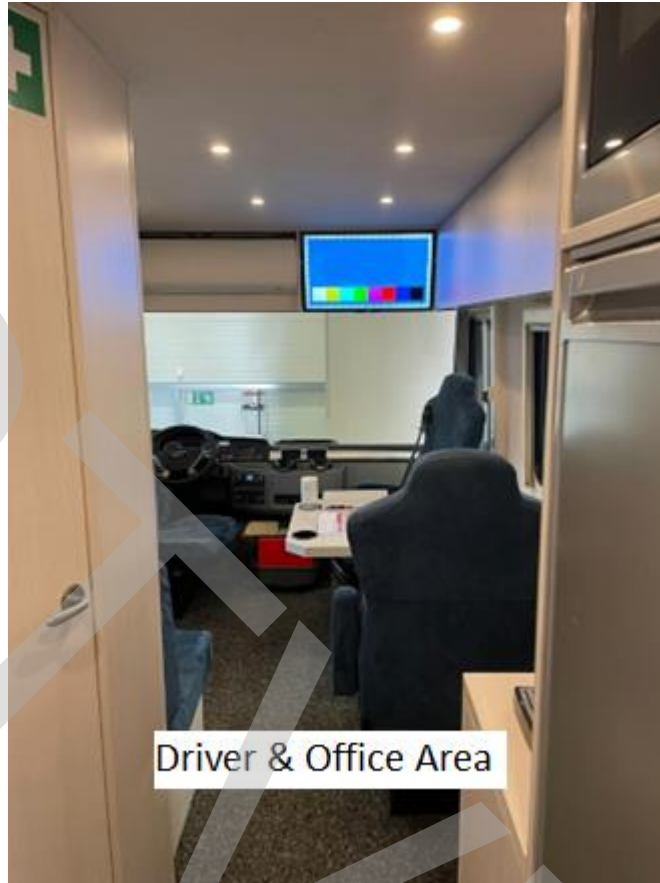
sports tv media
distribution

Paradeisergasse 9 • 9020 Klagenfurt, Austria
Tel.: +43 463-90 8000 • Fax: +43 463-90 8000-99
e-mail: stvmd@stvmd.com • <http://www.stvmd.com>



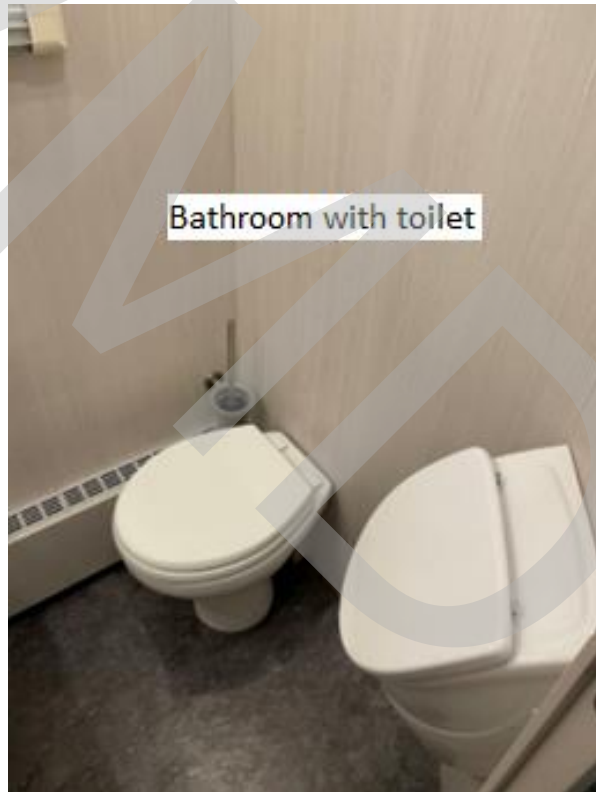
sports tv media
distribution

Paradeisergasse 9 • 9020 Klagenfurt, Austria
Tel.: +43 463-90 8000 • Fax: +43 463-90 8000-99
e-mail: stvmd@stvmd.com • <http://www.stvmd.com>



sports tv media
distribution

Paradeisergasse 9 • 9020 Klagenfurt, Austria
Tel.: +43 463-90 8000 • Fax: +43 463-90 8000-99
e-mail: stvmd@stvmd.com • <http://www.stvmd.com>



sports tv media
distribution

Paradeisergasse 9 • 9020 Klagenfurt, Austria
Tel.: +43 463-90 8000 • Fax: +43 463-90 8000-99
e-mail: stvmd@stvmd.com • <http://www.stvmd.com>

Pictures outside of the OB Truck:





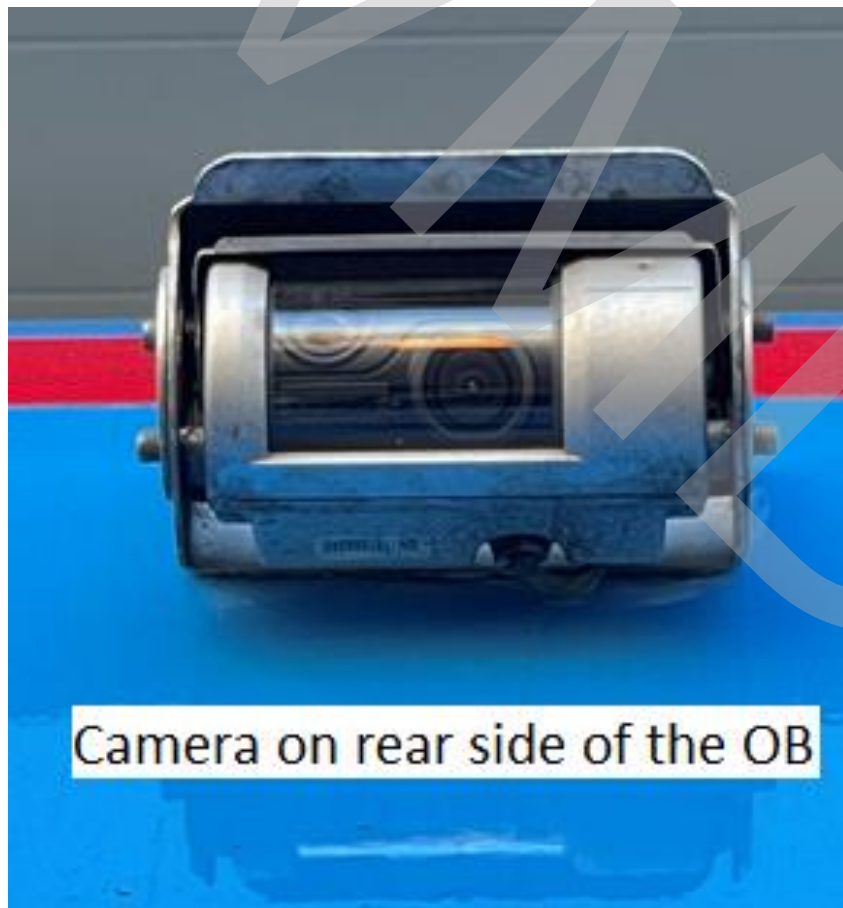








Levelling System



Camera on rear side of the OB

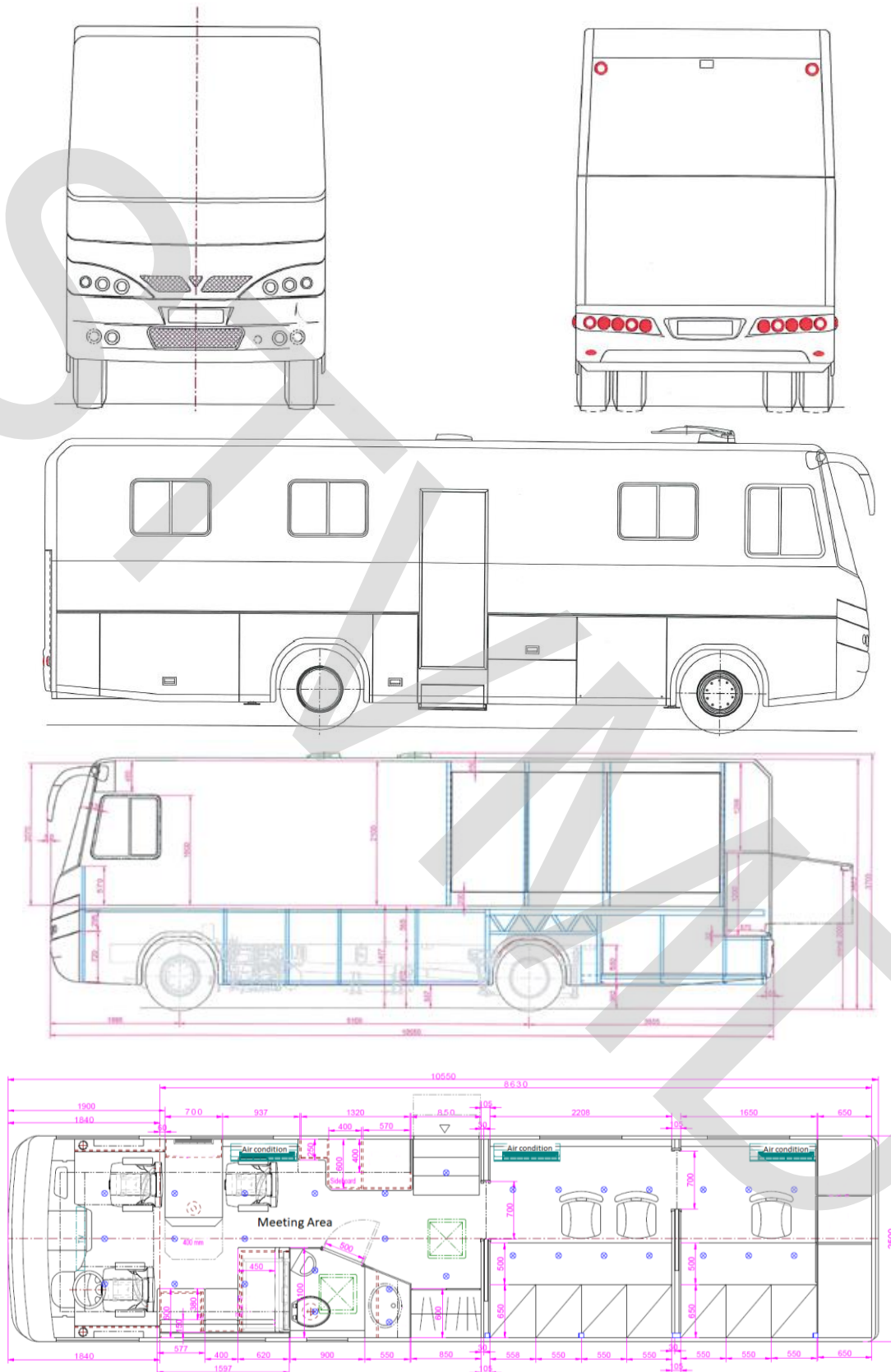
Pictures of the drivers cabin:



sports tv media distribution

Paradeisergasse 9 • 9020 Klagenfurt, Austria
 Tel.: +43 463-90 8000 • Fax: +43 463-90 8000-99
 e-mail: stvmd@stvmd.com • <http://www.stvmd.com>

Layout of the Truck:



sports tv media
distribution

Paradeisergasse 9 • 9020 Klagenfurt, Austria
Tel.: +43 463-90 8000 • Fax: +43 463-90 8000-99
e-mail: stvmd@stvmd.com • <http://www.stvmd.com>

For further information please contact:

sports tv media
distribution

Otmar Valzachi
sports tv media distribution GmbH

Paradeisergasse 9
9020 Klagenfurt

AUSTRIA

Tel:+43 463 908000
Fax:+43 463 908000 99
Mobile:+43 676 848606211
email: ov@stvmd.com
<http://www.stvmd.com>