

FOR SALE - 4K ready equipped Trailer

very compact and state of the art used single side extended 4K OB Trailer
prepared for up to 12x halfrack CCU's and 2x BPU's (for 2x SSL camera chains)
with storage room for up to 12 cameras
first registered in 2017
perfectly isolated OB Trailer, noise from the equipment is very low.

Short facts – equipped with:

Riedel Intercom 64x64

Riedel Video Router 180x180

Riedel Micron Multiview System

1x Sony XVS 7000 4K/3G/HD Video Mixer

1x Lawo MC56 MKII Audio Mixer

Please see the full technical equipment list of OB Trailer at the end of the PDF.

Available on request –not included:

Tractor available on request:

Please contact us for more information about the Tractor.

camera chains, lenses, tripods and EVS systems are not included in the package - available on request

Please contact us for more information.



Price on request:

All prices are excl. taxes

excl. transportation and insurance costs

excl. custom fees

State of the Art used 4K OB Trailer in top condition for sale

Technical specifications:

Short description:

very compact and state of the art single extended OB Trailer
 14 working seats available with 5:1 audio mixing area.
 Please see the layout and full equipment list of the Trailer at the end of the PDF

Extension:

Single side extended

Vehicle measurements:

11,5m length x 4,3m width x 4,0m height

First registration:

in 2017

Power requirements:

1x 63 Amp 3-phase 400VAC

Pre cabling:

12x halftrack CCU's and 2x BPU's (for 2x SSL camera chains)

EVS implementation:

Space for 2x 12channel max EVS server or 3x 8 channel server
 All EVS monitors are extendable to different heights

Vision Mixer:

Sony XVS-7000 4K/3G/HD 2ME boards
 2D DME, 64 i/p, 32 o/p /
 Frame/ Clip Memory / Format Converter

Video Mixer Licenses:

XZS-7200 Multi Program2 Software
 XZS-7510 Switcher Upgrade Software (MIX/EFFECT 1st Board 4K)
 XZS-7520 Switcher Upgrade Software (MIX/EFFECT 2nd Board 4K)

Main Production Panel:

3ME ICP-X7000, 28 XPT buttons, 16 keys, 2, 5D resizers on all keys, macros, snapshots

Video Router:

Riedel Video Router 180x180 (all 3G)
 Riedel Micron Multiview System
 Mediornet Compact Pro Stage Boxes ,
 Converters 4K/3G/HD/SD X-conv, 3G/HD/SD Down Converter & Video Delay

Control System:

VSM Studio

Audio:

Lawo MC56 MKII
Compact Core (16x madi sfp, 3x dsp 48ch)
Genelec 5.1 monitoring
41 Emb / 26 deembedders, madi, audio follows video
Dolby-E Enc/Dec, Dolby Digital Enc/Dec
T.C. Electronics 6000, 4000, 3000 D-Two

Intercom:

Riedel 64x64, Panels 12 int, 4 ext
16 ext 4w, digital 2w PL lines, Riedel c3 beltpacks
1 madi card,
2x Motorola RT 4 ch duplex base stations and 12x walkies

Air condition System:

2x Daikin outside air condition units- 5 indoor units
working up to 47 degrees

Walkable roofs:

available, but no possibility to work on the roof with cameras, as there is no fence

Air suspension:

available on the rear side

Levelling system:

hydraulic levelling system available

Cabling:

8x 200m Video fibre cable
1x 30m power cable – 63 Ampere CEE

Pictures Production Gallery / Vision Control / Audio Gallery:



**Production Gallery
equipped with Sony
XVS 7000 4K/3G/HD
Video Mixer**

sports tv media distribution

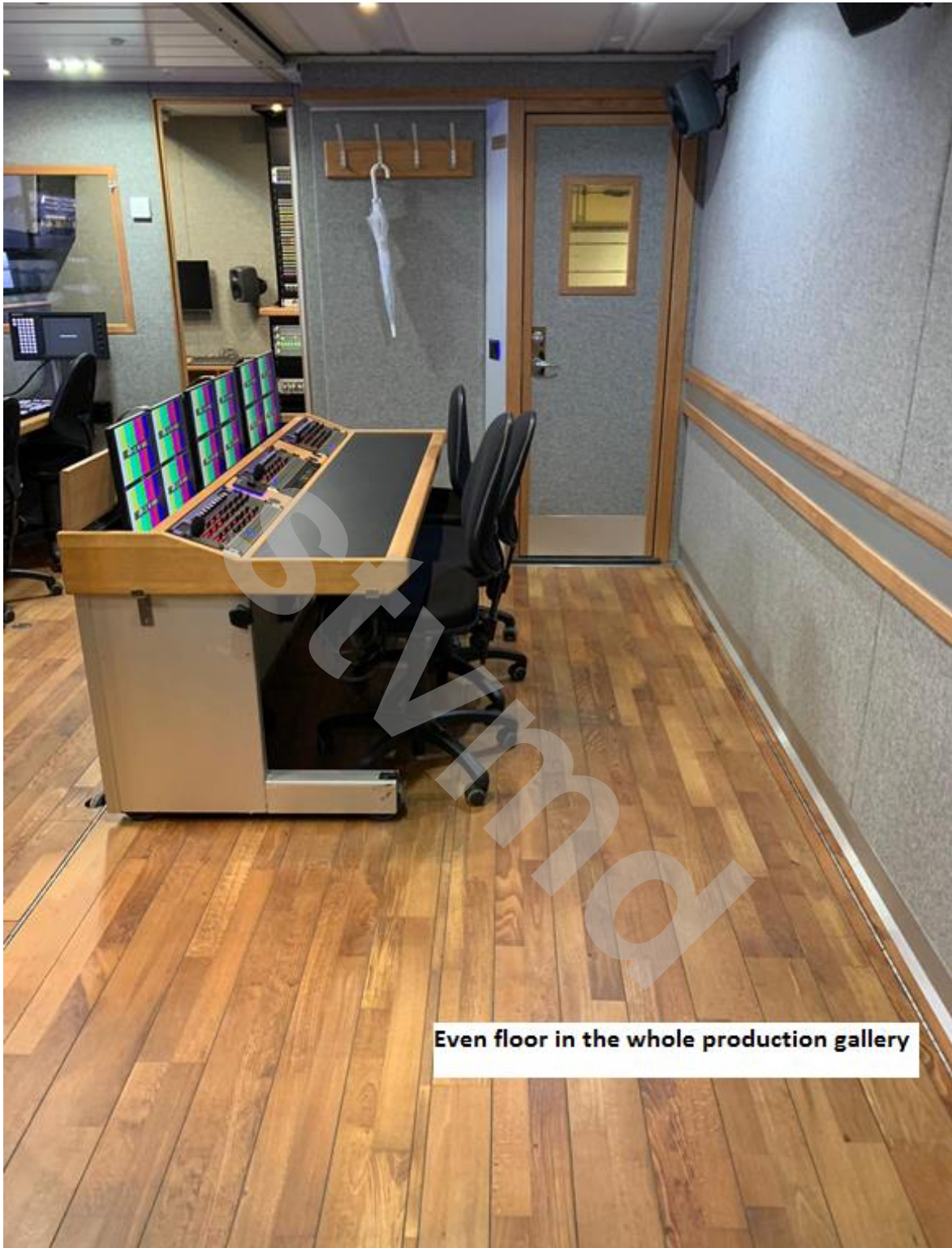
Paradeisergasse 9 • 9020 Klagenfurt, Austria
Tel.: +43 463-90 8000 • Fax: +43 463-90 8000-99
e-mail: stvmd@stvmd.com • <http://www.stvmd.com>



State of the Art used 4K OB Trailer in top condition for sale

sports tv media
distribution

Paradeisergasse 9 • 9020 Klagenfurt, Austria
Tel.: +43 463-90 8000 • Fax: +43 463-90 8000-99
e-mail: stvmd@stvmd.com • <http://www.stvmd.com>



Even floor in the whole production gallery



sports tv media
distribution

Paradeisergasse 9 • 9020 Klagenfurt, Austria
Tel.: +43 463-90 8000 • Fax: +43 463-90 8000-99
e-mail: stvmd@stvmd.com • <http://www.stvmd.com>



State of the Art used 4K OB Trailer in top condition for sale

sports tv media
distribution

Paradeisergasse 9 • 9020 Klagenfurt, Austria
Tel.: +43 463-90 8000 • Fax: +43 463-90 8000-99
e-mail: stvmd@stvmd.com • <http://www.stvmd.com>



Lawo MC56 MKII Audio Mixer



State of the Art used 4K OB Trailer in top condition for sale

sports tv media distribution

Paradeisergasse 9 • 9020 Klagenfurt, Austria
Tel.: +43 463-90 8000 • Fax: +43 463-90 8000-99
e-mail: stvmd@stvmd.com • <http://www.stvmd.com>



State of the Art used 4K OB Trailer in top condition for sale





Pictures from the outside of the OB Trailer:



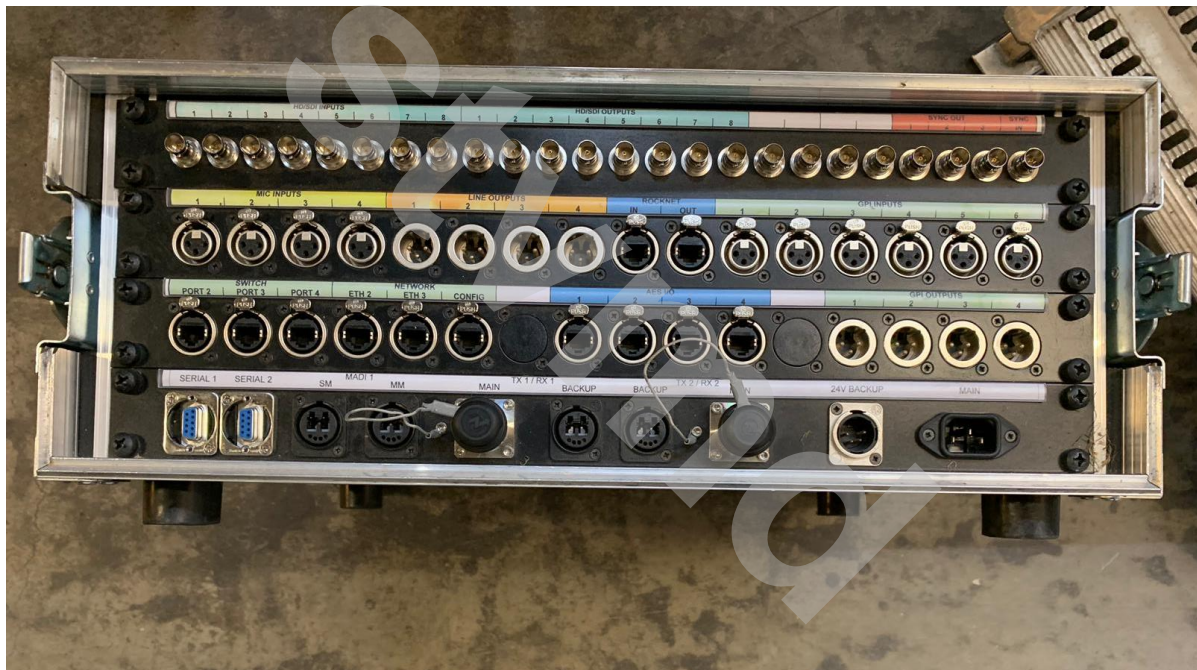






sports tv media
distribution

Paradeisergasse 9 • 9020 Klagenfurt, Austria
Tel.: +43 463-90 8000 • Fax: +43 463-90 8000-99
e-mail: stvmd@stvmd.com • http://www.stvmd.com



State of the Art used 4K OB Trailer in top condition for sale

sports tv media distribution

Paradeisergasse 9 • 9020 Klagenfurt, Austria
Tel.: +43 463-90 8000 • Fax: +43 463-90 8000-99
e-mail: stvmd@stvmd.com • <http://www.stvmd.com>



State of the Art used 4K OB Trailer in top condition for sale

sports tv media
distribution

Paradeisergasse 9 • 9020 Klagenfurt, Austria
Tel.: +43 463-90 8000 • Fax: +43 463-90 8000-99
e-mail: stvmd@stvmd.com • <http://www.stvmd.com>



State of the Art used 4K OB Trailer in top condition for sale



sports tv media
distribution

Paradeisergasse 9 • 9020 Klagenfurt, Austria
Tel.: +43 463-90 8000 • Fax: +43 463-90 8000-99
e-mail: stvmd@stvmd.com • <http://www.stvmd.com>



State of the Art used 4K OB Trailer in top condition for sale

sports tv media
distribution

Paradeisergasse 9 • 9020 Klagenfurt, Austria
Tel.: +43 463-90 8000 • Fax: +43 463-90 8000-99
e-mail: stvmd@stvmd.com • <http://www.stvmd.com>



State of the Art used 4K OB Trailer in top condition for sale

sports tv media
distribution

Paradeisergasse 9 • 9020 Klagenfurt, Austria
Tel.: +43 463-90 8000 • Fax: +43 463-90 8000-99
e-mail: stvmd@stvmd.com • <http://www.stvmd.com>



State of the Art used 4K OB Trailer in top condition for sale



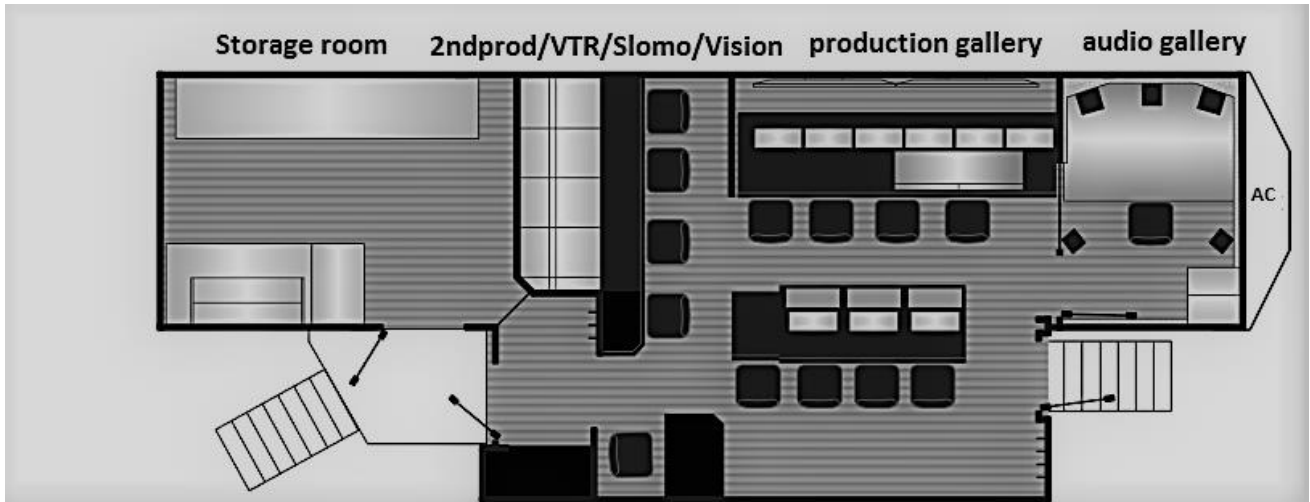
sports tv media
distribution

Paradeisergasse 9 • 9020 Klagenfurt, Austria
Tel.: +43 463-90 8000 • Fax: +43 463-90 8000-99
e-mail: stvmd@stvmd.com • <http://www.stvmd.com>



State of the Art used 4K OB Trailer in top condition for sale

Layout of the OB Trailer:



Full equipment list of the OB Trailer :

Ref	Qty	Manufacturer	Model	Description
1	GROUP 1: SYSTEM EQUIPMENT			
1.1	SECTION 1: VEHICLE & COACHBUILD			
1.1.1	1	GROTH KAROSS AB	OB-COACHBUILD	Trailer with custom coach-build
1.2	SECTION 2: INSTALLATION MATERIALS			
1.2.1	FIBRE			
1.2.1	1	TBD	MISC	MISC SC-SC, LC-LC etc.
1.2.2	VIDEO			
1.2.2	13	BRYANT	DVMM132B	HD MUSA video J/F 2X32 non-normalising
1.2.2	350	BRYANT	MMUSA1BK	Black MUSA U-Link
1.2.2	30	BRYANT	JMV0300BK	30cm Midi Video Patch Cable - Black
1.2.2	40	BRYANT	JMV0600RD	60cm Midi Video Patch Cable - Red
1.2.2	40	BRYANT	JMV0900GR	90cm Midi Video Patch Cable - Green
1.2.2	1	TBD	TBD	3G VIDEO CABLE INSTALLATION
1.2.3	AUDIO			
1.2.3	10	CANFORD AUDIO	45-793	M&M 3+5 BANTAM JACKFIELD 1U 2x48 brass jacks, mono-pitch centre-space, black
1.2.3	40	CANFORD AUDIO	43-9500	PATCH CORD 300MM BLACK
1.2.3	40	CANFORD AUDIO	43-9520	PATCH CORD 600MM BLUE
1.2.3	40	CANFORD AUDIO	43-9536	PATCH CORD 900MM BLUE
1.2.3	1	TBD	TBD	AUDIO CABLE INSTALLATION
1.2.3	4	CANFORD	SS 325310	ANALOG AUDIO TRANSFORMER
1.2.4	NETWORK			
1.2.4	2	MOLEX	PID-00073	Cat5E 48 PORT 1U high density patch pnl
1.2.4	40	CANFORD AUDIO	46-692	300mm-RS422 SCREENED P/CORD RJ45S-RJ45S
1.2.4	1	TBD	TBD	CAT6 CABLE INSTALLATION
1.2.5	WALLBOXES ETC.			
1.2.5	20	CANFORD AUDIO	24BNC (CANFORD 48-4207)	Comms/Miscellaneous Term Panel with 24 BNC
1.2.5	12	CANFORD AUDIO	45-3303	Comms/Miscellaneous Term Panel with 16 XLR Male
1.2.5	12	CANFORD AUDIO	45-3301	Comms/Miscellaneous Term Panel with 16 XLR Female
1.2.5	12	CANFORD AUDIO	45-3321	XLR TERMINATION PANEL 1U 1x8 XLRf (left), 1x8 XLRm (right), black
1.2.5	10	TBD	MISC	MISC TERM PANELS WITH VARIOUS CONNECTORS
1.2.5	10	ARGOSY	ND-57-003	Cage Nuts Pk100 0.70/1.60mm
1.2.5	10	ARGOSY	ND-00-6616	M6 x 16 Pk100 Black
1.2.5	10	ARGOSY	ND-00-001	M6 Washer Black Pk100
1.2.5	1	SAS/BSEL	8PAIR	CUSTOM MADE PANEL 1U WITH 8 MIL26 CONNECTORS

1.3	SECTION 3: CAMERA SYSTEMS & EQUIPMENT			
1.3.1	CAMERA CONTROL UNITS			
1.3.1	.1	1	SONY	CNA-1 CAMERA CONTROL NETWORK ADAPTER
1.3.1	.2	1	SONY	HZC-CSM10 CAMERA SYSTEM MANAGEMENT SOFTWARE
1.3.1	.3	1	MICROSOFT	TABLET PC Surface Pro 4 i5 128GB 4GB W10 12.3" screen
1.3.2	INTERNAL FIBRE FROM CCU TO TAILBOARD			
1.3.2	.1	12	LEMO	UKF.3K.C46.000800 Termination of FMW.3K.93C.TLMC96Z, LEMO Panel Mount plug, to PUW.3K.93C.TLCC96, LEMO In-line socket, using Furukawa 'J' grade, ARIB Standard camera cable at overall length 8 metres.
1.3.2	.2	2	TBD	TBD 3UX12 way angled fibre term panel unpopulated - black
1.3.2	.3	3	TBD	TBD Lemo FXW.3K c/w 18 mts LC tails & copper leads
1.3.2	.4	1	TBD	TBD Lemo EDW.3K c/w 2 mts SC tails & copper leads
1.3.2	.5	4	TBD	TBD Lemo FXW.3K c/w 15 mts LC tails & copper leads
1.3.2	.6	4	TBD	TBD Lemo EDW.3K c/w 1 mts LC tails & copper leads
1.3.2	.7	2	TBD	TBD Lemo FXW.3K c/w 2 mts LC tails & copper leads
1.3.3	FIBRE CAMERA AND AUDIO CABLES			
1.3.3	.1	8	LEMO	UKF.3K.B20.020000 Lemo FUW to PUW terminated to 200m length
1.3.3	.2	8	LEMO	UKF.3K.B20.001000 HD cable assy, loose, 10m, Lemo-Furukawa - FUW-PUW - 10M
1.4	SECTION 4: VIDEO SYSTEM			
1.4.1	VISION MIXER			
1.4.1	INTERFACE PROCESSOR & CONTROL			
1.4.1	.1.1	1	SONY	PFV-SP3100 Signal Processing Unit
1.4.1	.1.2	1	SONY	HKSP-R80 Routing Switcher Controller
1.4.1	.1.3	1	SONY	HKSP-R81 Routing Switcher Backup CPU
1.4.1	.1.4	1	SONY	HK-PSU01 Power Supply Unit

Ref	Qty	Manufacturer	Model	Description
1.4.1.2				XVS-7000 SYSTEM
1.4.1.2.1				MAINFRAME
1.4.1.2.1.1	1	SONY	XVS-7000	MULTI FORMAT SWITCHER PROCESSOR
1.4.1.2.1.2	4	SONY	XKS-S8111	XVS-7/8000 SDI INPUT AND FC CONNECTOR BOARD
1.4.1.2.1.3	3	SONY	XKS-S8165	XVS-7/8000X SDI OUTPUT CONNECTOR BOARD
1.4.1.2.1.4	1	SONY	XKS-8460	XVS-7/8000X FORMAT CONVERTER BOARD
1.4.1.2.1.5	1	SONY	XKS-8440	XVS-7/8000X FRAME MEMORY BOARD
1.4.1.2.1.6	2	SONY	XKS-7210	XVS-7/8000 M/E BOARD
1.4.1.2.1.7	1	SONY	XKS-8470	XVS-7/8000 2 CH DME BOARD
1.4.1.2.1.8	1	SONY	XZS-7510	SWITCHER UPGRADE S/W
1.4.1.2.1.9	1	SONY	XZS-7520	SWITCHER UPGRADE S/W
1.4.1.2.1.10	1	SONY	XZS-7200	MULTI PROGRAM 2 S/W
1.4.1.2.2				MAIN CONTROL PANEL
1.4.1.2.2.1	1	SONY	MKS-X7011	SONY MENU PANEL
1.4.1.2.2.2	3	SONY	MKS-X7018	SONY 28 XPT MODULE
1.4.1.2.2.3	3	SONY	MKS-X7020	SONY STANDARD TRANSITION MODULE
1.4.1.2.2.4	3	SONY	MKS-X7024	SONY FLEXIPAD MODULE
1.4.1.2.2.5	1	SONY	MKS-X7026	SONY 10-KEY PAD MODULE
1.4.1.2.2.6	1	SONY	MKS-X7031TB	SONY TRACK BALL MODULE
1.4.1.2.2.7	1	SONY	MKS-X7033	SONY UTILITY/SHOT BOX MODULE
1.4.1.2.2.8	3	SONY	MKS-X7075	SONY EXTENSION ADAPTOR
1.4.1.2.2.9	3	SONY	MKS-X7099	SONY CPU MODULE
1.4.1.2.2.10	1	FLAT SCREEN ARMS	8321-000-000	Standard MIDI arm
1.4.1.2.2.11	1	FLAT SCREEN ARMS	8703-000-000	Maxi Monitor Arm
1.4.1.2.2.12	1	FLAT SCREEN ARMS	8321-000-000	Standard MIDI arm
1.4.1.2.3				SYSTEM CONTROL
1.4.1.2.3.1	1	SONY	MKS-X2700	SONY SYSTEM INTERFACE UNIT
1.4.1.2.3.2	1	SONY	PWS-110SC1	SWITCHER CONTROL STATION
1.4.2				VIDEO ROUTER
1.4.2.1	13	RIEDEL	MICRON	12 x 12 3G/HD/SD I/O UNIT WITH EMBEDDING/DEEMBEDDING
1.4.2.2	3	RIEDEL	METRON	FIBRE SWITCH FOR MEDIORNET
1.4.2.3	2	RIEDEL	COMPACT PRO	STAGEBOX FOR VIDEO/AUDIO/CONTROL
1.4.3				MULTIVIEWER
1.4.3.1	8	RIEDEL	MICRON-MV	4 x 4 3G/HD/SD I/O UNIT WITH EMBEDDING/DEEMBEDDING AND 4 MULTIVIEW HEADS WITH A TOTAL COUNT OF 18 PIPS
1.4.4				VIDEO CONVERSION & DISTRIBUTION
1.4.4.1	5	OXYGEN DCT	ISOLATZ-HD	HD/SD-SDI DC Isolation
1.4.4.2	5	COBALT	9901-UDX-HD	Cobalt Digital 9901-UDX-HD - Up/Down/Cross Converter with HD/SD-SDI Embedded Audio Support, Frame Sync, AFD, Timecode and Closed Caption Support
1.4.4.3	5	COBALT	RM20-9901-C	Cobalt Digital RM20-9901-C - 20-slot Frame Rear I/O Module (Standard Width) 4 3G/HD/SD-SDI Inputs, 2 AES I/O BNCs, 4 3G/HD/SD-SDI Outputs

1.4.4.4	1	COBALT	9392	Dual Channel Time Code Burn Card, 2 3G/HD/SD-SDI Inputs, 4 3G/HD/SD-SDI Outputs, 2 LTC Inputs
1.4.4.5	1	COBALT	RM20-9392-D	20-slot Frame Rear I/O Module (Standard Width) (2) 3G/HD/SD SDI Input BNC, (4) 3G/HD/SD-SDI Reclocked Output BNCs
1.4.4.6	8	COBALT	9501-DCDA-HD	Obsidian Downconverter with HS/SD-SDI Input, SD Passthrough, HD/SD-SDI Reclocking, Closed Caption Support, Frame Sync, SD-SDI and SD Analog Outputs, Analog and AES Audio Outputs
1.4.4.7	4	COBALT	RM20-9501-A	20-slot Frame Rear I/O Module (Standard Width) (2) 3G/HD/SD SDI Input BNC, (4) 3G/HD/SD-SDI Reclocked Output BNCs, (4) Output BNCs (GUI-selectable as SD-SDI and/or Analog CVBS)
1.4.4.8	4	COBALT	9001	3G/HD/SD RELOCKER 1x9
1.4.4.9	2	COBALT	RM20-9001-B/S-DIN	20-slot Frame Rear I/O Module (Standard Width) (1) 3G/HD/SD SDI Input MINI-BNC, (9) 3G/HD/SD-SDI Reclocked Output MINI-BNCs
1.4.4.10	15	COBALT	9003	DUAL 3G/HD/SD RELOCKER 2x4
1.4.4.11	8	COBALT	RM20-9003-B/S-DIN	20-slot Frame Rear I/O Module (Standard Width) (2) 3G/HD/SD SDI Input MINI-BNC, (4) 3G/HD/SD-SDI Reclocked Output MINI-BNCs
1.4.4.12	7	COBALT	9910DA-AV	ANALOG VDA 1x8 WITH LOOP
1.4.4.13	4	COBALT	RM20-9910AV-BS-DIN	20-slot Frame Rear I/O Module (Standard Width) (2) CVBS Input MINI-BNC, (8) CVBS Reclocked Output MINI-BNCs

Ref	Qty	Manufacturer	Model	Description
1.4.4.14	3	COBALT	HPF-9000-N	Cobalt Digital HPF-9000-N - 20-slot High Power Frame for Cobalt Digital 9000 Series Cards - 2 Rack Unit with Fans and Metal Plates on Rear I/O - Includes one PS-9000 Power
1.4.4.15	3	COBALT	MFC-8320-N	Network Card
1.4.4.16	3	COBALT	PS-9000	Cobalt Digital PS-9000 - Power Supply for HPF-9000 High Power Frame
1.4.4.17	1	COBALT	DASHBOARD	Monitoring Software
1.4.4.18	5	LAWO	VIDEOLINE PRO 8	1RU 8 CHANNEL 3G/HD/SD MUX/DEMUX via MADI and FRAMESYNC
1.4.4.19	1	IMAGINE COMM.	FR6822+QXFE	FRAME,2RU,ETHERNET,HTTP,FANS,ONE PS,QSEE
1.4.4.20	1	IMAGINE COMM.	6822+AC	AC POWER SUPPLY FOR FR6822+ SERIES FRAME
1.4.4.21	2	FOR-A	FA-505	5IN / 5OUT with Up/Down/Cross Converter All-Round Frame Synchronizer
1.4.5	VIDEO RECORD & PLAYBACK EQUIPMENT			

1.4.5.1	2	BDM	VTR TRAY	Rack VTR tray
1.4.5.2	1	LGZ BROADCASTING TECH	LGZ USB	USB Recorder
1.4.6	REFERENCE SYSTEM			
1.4.6.1	1	IMAGINE COMM.	VSG-4TSG	Advanced Test Signal Generator: Analog, SD, HD, 3G, AES, DARS, IEEE-1588 PTP capability, includes two PSU-12-1 power adaptors for redundancy,
1.4.6.2	1	IMAGINE COMM.	GPS-3904	GPS antenna and receiver kit, 110-240 VAC operation, serial data, 10 MHz and PPS outputs, includes AC power supply, RG-59 antenna cable (23m/75ft), for use with VSG-4MTG, VSG-4TSG and VSG-4CSD for time/date and video, audio and time code applications
1.4.6.3	1	IMAGINE COMM.	DRT-5	Dual Rack tray for various products including VSG-4MTG
1.4.6.4	1	IMAGINE COMM.	RMT-U1	Rackmount tray universal for power supply
1.4.6.5	1	IMAGINE COMM.	VSG-4-BRK-1	Breakout panel and 5 ft cable with HD26 pin DSUB Male to Female connectors for the VSG-4 series.
1.4.7	MONITORING			
1.4.7.1	VISION / EIC			
1.4.7.1.1	2	SONY	PVM-A170	17inch professional OLED Video Monitor
1.4.7.1.2	2	SONY	BVM-F170A	17inch Professional Video Monitor
1.4.7.1.3	1	SONY	BKM-16R	Control Unit For BVM-E/L Series
1.4.7.1.4	3	BON	BEM-182	18.5" Monitor. 1920x1080 High Resolution Display with HDMI and 3G/HD/SD-SDI input. VESA mounting.
1.4.7.1.5	1	EIZO	EV-2450BK	24" 1920x1080 LCD Display
1.4.7.1.6	1	TBD	MOUNT	MONITOR MOUNT
1.4.7.1.7	2	IMAGINE COMM.	CMN-91-3GB	WAVEFORM MONITOR
1.4.7.1.8	2	IMAGINE COMM.	DRC-3	Double rackmount for CMN-91
1.4.7.1.9	2	IMAGINE COMM.	CMN-41-3GB	Compact Monitor Series multiformat onscreen monitor, 3G/HD/SD-SDI inputs, DVI-D output, 1RU, half rack
1.4.7.1.10	2	IMAGINE COMM.	DRT-4A	Double rackmount tray for CMN-41 and CMN-MV, use BLK-4 to fill unused space if needed
1.4.7.1.11	2	IMAGINE COMM.	BLK-5	Blank panel for left or right side of DRT-4A or DRT-5
1.4.7.2	PRODUCTION			
1.4.7.2.1	4	SONY	FWD-55X8600P	55" BRAVIA Professional 4K LED display with digital signage feature
1.4.7.2.2	4	DELTACOMM DEVELOPMENT	SDI01-2	3G/HD/SD TO HDMI CONVERTER
1.4.7.2.3	2	EIZO	EV3237-BK	31" 4K LCD
1.4.7.2.4	2	DELTACOMM DEVELOPMENT	SDI01-2	3G/HD/SD TO HDMI CONVERTER
1.4.7.3	VIP BENCH			
1.4.4.3.1	3	EIZO	EV-2450BK	24" 1920x1080 LCD Display
1.4.4.3.2	3	DELTACOMM DEVELOPMENT	SDI01-2	3G/HD/SD TO HDMI CONVERTER
1.4.7.4	AUDIO			
1.4.7.4.1	2	SONY	PVM-A170	17inch professional OLED Video Monitor
1.4.7.4.3	4	DELTACOMM DEVELOPMENT	SDI01-2	3G/HD/SD TO HDMI CONVERTER
1.4.7.4.4	4	EIZO	EV-2450BK	24" 1920x1080 LCD Display
1.4.7.4.5	1	TBD	MOUNT	MONITOR MOUNT
1.5	SECTION 5: CONTROL SYSTEM			

sports tv media distribution

Paradeisergasse 9 • 9020 Klagenfurt, Austria
Tel.: +43 463-90 8000 • Fax: +43 463-90 8000-99
e-mail: stvmd@stvmd.com • http://www.stvmd.com

1.5.1	SERVER S			
1.5.1.1	2	LAWO	VSM HARDWARE 02	vsmHardware HP DL360 running core system software
1.5.1.2	2	HP	2620-48	48 port switch Layer 2

Ref	Qty	Manufacturer	Model	Description
1.5.2	SOFTWARE CONFIGURATION			
1.5.2.1	1	LAWO	VSMSOFT MEDIUM 01	VSM Studio License medium (up to 6400x6400 Crosspoints) Supported operating system: - Windows Server 2012R2 - Windows Server 2008R2
1.5.2.2	4	LAWO	VSMSOFT MEDIUM 02	Control ports Medium systems - 3x Imagine Comms platinum router - 1x Guntermann & Drunck KVM system - 2x Riedel Digital Artist - 1x Imagine Communications Nexio - 11x Sony Cameras (remote control)
1.5.2.3	1	LAWO	VSMSOFT MEDIUM 03	Control ports for multiviewers (Imagine communications)
1.5.2.4	1	LAWO	VSMSOFT MEDIUM 04	vLayer Medium system
1.5.2.5	1	LAWO	VSMSOFT MEDIUM 08	Storage groups medium
1.5.2.6	1	LAWO	VSMSOFT MEDIUM 10	Gadgets in use 500 Medium system studios with a lot of processing do require this function
1.5.2.7	1	LAWO	VSMSOFT MEDIUM 12	vSignals Medium system virtual signals to create re-entries without using physical resources of your router
1.5.2.8	1	LAWO	VSMSOFT MEDIUM 13	Pseudo devices medium systems, link video/audio/TC/RS422 signals unto a switchable overall bundle
1.5.2.9	1	LAWO	VSMSOFT MEDIUM 17	Tally Medium system, enables the intelligent tally management within vsmStudio
1.5.2.10	1	LAWO	VSMSOFT MEDIUM 18	GPI medium system, a powerful GPI logic toolset to create tally logic and more
1.5.2.11	1	LAWO	VSMSOFT MEDIUM 21	Additional servers medium system vsmStudio licenses for additional servers
1.5.2.12	1	LAWO	VSM PANEL	vsmPanel, application to be installed on touc PC or workstations
1.5.2.13	1	LAWO	VSM G SL SMART HUB 111	SmartHub 1x TCPIP to 1xRS232 and 1x RS422
1.5.3	CONTROL PANELS			
1.5.3.1	VISION / EIC			
1.5.3.1.1	1	LAWO	VSM G SL PANEL 16	Multi-Bus Panel 19" 2U with 83 LCD-Buttons RGB colored + 1 Incremental Encoder; TCP/IP port; RS422; incl. Single PSU Delivery time: Mid of 2013
1.5.3.1.2	2	LAWO	VSM G SL PANEL 04	Multi-Bus Panel with 24 LCD Buttons RGB coloured in a Imagine CMN-91 housing; TCP/IP

				port; RS-422; incl. Single PSU / RAL 9005
1.5.3.2	PRODUCTION			
1.5.3.2.1	2	LAWO	VSM G SL PANEL 11	Multi-Bus Panel 19" 1U with 41 LCD-Buttons RGB colored + 1 Incremental Encoder; TCP/IP port; RS422; incl. Single PSU Delivery time: Mid of 2013
1.5.3.2.2	1	LAWO	VSM G SL PANEL 12	Multi-Bus Panel 19" 1U with 42 LCD-Buttons RGB colored; TCP/IP port; RS422; incl. Single PSU Delivery time: April 2013
1.5.3.3	VIP BENCH			
1.5.3.3.1	3	LAWO	VSM G SL PANEL 12	Multi-Bus Panel 19" 1U with 42 LCD-Buttons RGB colored; TCP/IP port; RS422; incl. Single PSU Delivery time: April 2013
1.5.3.4	AUDIO			
1.5.3.4.1	1	LAWO	VSM G SL PANEL 16	Multi-Bus Panel 19" 2U with 83 LCD-Buttons RGB colored + 1 Incremental Encoder; TCP/IP port; RS422; incl. Single PSU Delivery time: Mid of 2013
1.5.4	GPI/O & UMD			
1.5.4.1	2	LAWO	VSM G SL UMD 01	19" 1RU Grafical Monitor Display with green colored DOT-Matrix 7*170 pixels amd trichromatic Tally Bar; RS-422 loop; incl. Single PSU / RAL 9005
1.5.4.2	1	LAWO	VSM G SL GPI/O 02	1U+64 IN+TCP/IP +Single PSU / RAL 9005
1.5.4.3	2	LAWO	VSM G SL GPI/O 03	19" 1 RU with 64 Out; Phoenix connector, TCP/IP connection, incl. PSU / RAL 9005
Ref	Qty	Manufacturer	Model	Description
1.6	SECTION 6: AUDIO SYSTEM			
1.6.1	AUDIO MIXER			
1.6.1.1	LAWO MC56			
1.6.1.1.1	1	LAWO	MC2 56 MKII 32 FADERS	LAWO "mc2 56 MKII HD" (16+16C) Digital Broadcast and Production Mixing Console - with integrated I/O routing matrix - without Stand
1.6.1.1.2	1	LAWO	CONTROL DESK FRAME	frame 16-16, networking posability
1.6.1.1.3	1	LAWO	CHANNEL CONTROL AREA	1 pc. Fader Modules, each with 16 motor faders each channel with colour coding Faderstrips 1 pc. Free Control Module, each with 16 channel strips - each strip each with 2 Free Controls, Gain Control - Isolate option for two engineer operation 1 pc. Channel Meter Module (each 16 strips), - switchable to DIN PPM, Nordic, UK or dBfs scale. - Visualisation of Bus assignment - Dynamics gain reduction meter (GRM)
1.6.1.1.4	1	LAWO	CENTRAL CONTROL AREA	Central Control Area with GUI 1 pc. Fader Module with 16 motor faders - TFT Screen (GUI) - Central Channel Control Area - Access Fader - Free Control Assign

				<ul style="list-style-type: none"> - Hyperpanning Section Touchscreen Monitoring Control Area with: <ul style="list-style-type: none"> - control for multiple monitoring systems - incl. surround facilities (surround facility available only if analog outp. cards are equipped accordingly) Screen Control Module with: <ul style="list-style-type: none"> - Assignment Area - motorized Joystick - illuminated Trackball I/O on surface which includes <ul style="list-style-type: none"> - 16 analogue line inputs - 16 analogue line outputs - 8 AES inouts and outputs - 8 GPIO - 2 Headphone sockets Reveal Fader on Overbridge USB Keyboard
1.6.1.1.5	1	LAWO	DSP CORE CONFIGURATION IN COMPACT CORE	<ul style="list-style-type: none"> - 16 MADI interfaces SFP: '- 3 DSP cards for total 270 Broadcast DSP channels @ 48kHz - 1 Router Control Card including: <ul style="list-style-type: none"> - up to 10m cables for connecting DSP core with control desk '- 1 x 10m optical MMF cables for connecting a DALLIS frame with HD core (MADI I/O) '- factory commissioning and test
1.6.1.1.6	1	LAWO	TBD	RTW TM7 Integration KIT
1.6.2	AUDIO RECORD & PLAYBACK EQUIPMENT			
1.6.2.1	1	SOFRON MEDIA SERVICES	SI-MISC-PROD	Softron GPI Commander 2
1.6.2.2	1	APPLE	SI-MISC-PROD	Mac Mini • 2.6GHz Quad-Core Intel Core i7 • 8GB 1600MHz DDR3 SDRAM - 2x4GB • 256GB Solid-State Drive • User's Guide (English)
1.6.2.3	1	APPLE	SI-MISC-PROD	Apple USB External SuperDrive
1.6.2.4	1	APPLE	SI-MISC-PROD	Apple MC184B/B Wireless Keyboard
1.6.2.5	1	APPLE	SI-MISC-PROD	Apple Magic Mouse
1.6.2.6	1	SONNET TECH	SI-MISC-PROD	Sonnot RackMac Mini Rackmount Enclosure
1.6.2.7	1	SONNET TECH	SI-MISC-PROD	Sonnot Super Accessory for a SuperDrive
1.6.3	AUDIO PROCESSING			
1.6.3.1	1	TC ELECTRONIC	MASTERING 6000 MKII	Multi-Engine System with Icon Remote
1.6.3.2	1	TC ELECTRONIC	MULTI CH REVERB	Surround Reverb Package for M6k
1.6.3.3	1	TC ELECTRONIC	AES-8	AES card for S6k
1.6.3.4	1	TC ELECTRONIC	REVERB 4000	Reverb Processor
1.6.3.5	1	TC ELECTRONIC	M3000	Dual-Channel Reverb/Effects Processor
1.6.3.6	2	TC ELECTRONIC	D-TWO	Delay Processor

Ref	Qty	Manufacturer	Model	Description
1.6.4	AUDIO CONVERSION			
1.6.4.1	1	DIRECTOUT TECHNOLOGIES	DIRANDIAMOXTSRC	ANALOGUE AND AES/MADI CONVERTOR
1.6.4.2	2	DIRECTOUT TECHNOLOGIES	DIRANDIAMO	ANALOGUE/MADI CONVERTOR
1.6.4.4	1	DIRECTOUT TECHNOLOGIES	MADI BRIDGE	8x8 MADI BRIDGE
1.6.4.5	1	DIRECTOUT TECHNOLOGIES	ANDIAMO.MC	32/32 MIC/LINE IN + 32 LINE OUT
1.6.4.6	1	DIRECTOUT TECHNOLOGIES	LAWO CONTROL LICENSE	Control licence for MADI Conversion

1.6.4.7	2	BARNFIND TECHNOLOGIES	BARNMINI-02	BarnMini-02 2 x SFP port for tranceiver inc PSU
1.6.4.8	2	BARNFIND TECHNOLOGIES	SFP-LX-SM-3G02	1310nm SDI-HD and 3G
1.6.4.9	2	BARNFIND TECHNOLOGIES	EB30HDRT-MM	Coaxial tranceiver BNC
1.6.5	AUDIO ANALOG MISC EQUIPMENT			
1.6.5.1	6	CTP SYSTEMS LTD	PREHEAR 1020	Prehear 1020
1.6.5.2	1	CTP SYSTEMS LTD	SIXMIX	Multiple Mixer Unit
1.6.5.3	6	IMAGINE COMM.	ARG6800+D	Remote GainAna.Aud.DAw/10x3-pin audio
1.6.5.4	1	CTP SYSTEMS LTD	IU80	Ident unit 1RU 8channel
1.6.5.5	2	BEHRINGER	EURORACK PRO RX1602	8 CH STEREO LINE MIXER RACKMOUNT
1.6.6	AUDIO REFERENCE / MONITORING			
1.6.6.1	2	COBALT	9910DA-WC	WORDCLOCK DA 1x8
1.6.6.2	1	COBALT	RM20-9910AV-BS-DIN	20-slot Frame Rear I/O Module (Standard Width) (2) CVBS Input MINI-BNC, (8) CVBS Reclocked Output MINI-BNCs
1.6.6.3	1	FOSTEX	RM-2	Fostex RM-2 Rackmount Monitor
1.6.7	AUDIO SPEAKER MONITORING			
1.6.7.1	AUDIO ROOM			
1.6.7.1.1	3	GENELEC	8030BPM	Genelec 8030BPM Speaker
1.6.7.1.2	4	GENELEC	8020CPM	Genelec 8020CPM Speaker
1.6.7.1.3	1	GENELEC	7050B	Genelec 7050B Subwoofer
1.6.7.2	PRODUCTION ROOM			
1.6.7.2.1	5	GENELEC	8020CPM	Genelec 8020CPM Speaker
1.6.7.2.2	1	GENELEC	7050B	Genelec 7050B Subwoofer
1.6.8	AUDIO CONFIDENCE MONITORING			
1.6.8.1	1	SONIFEX	RM-4C8-E1X	8 Channel, 3G/HD/SD-SDI, Audio Monitor, Dolby E, 1RU
1.7	SECTION 7: INTERCOM			
1.7.1	TALKBACK MATRIX			
1.7.1.1	1	RIEDEL	MFR-064 G2	ARTIST 64 MAINFRAME
1.7.1.2	2	RIEDEL	PSU-064-G2	POWER SUPPLY
1.7.1.3	1	RIEDEL	ART-Z-ASM-G2	SYNC MODULE FOR MAINFRAME AES SYNC OR WO
1.7.1.4	2	RIEDEL	CPU-128F G2	CPU CARD
1.7.1.5	2	RIEDEL	COAX-108 G2	8 X COAX PANEL CARD
1.7.1.6	1	RIEDEL	MADI-108 G2	Artist MADI client card
1.7.1.7	2	RIEDEL	AIO-108 G2	8 X ANALOG I/O CARD
1.7.1.8	1	RIEDEL	DIRECTOR	SOFTWARE
1.7.1.9	4	RIEDEL	ART-Z-SFP-CPU-SM-1310	FIBRE OPTIC MODULE SINGLE MODE
1.7.1.10	1	RIEDEL	ART-Z-HDLC	PATCH CABLE FOR REDUNDANT CPU
1.7.1.11	2	RIEDEL	SFP-MADI-SM-1310	FIBRE OPTIC MODULE SINGLE MODE FOR PMX
1.7.1.12	4	RIEDEL	RCP-1012E/O	12 BUTTON PANEL
1.7.1.13	6	RIEDEL	RCP-1028E/O	28 BUTTON PANEL
1.7.1.14	8	RIEDEL	MIC-30	MICROPHONE FOR RIEDEL PANELS 30CM
1.7.1.15	6	RIEDEL	MIC-3	MICROPHONE FOR RIEDEL PANELS 3CM
1.7.1.16	1	RIEDEL	ECP-1016E/O	16 BUTTON EXTENSION PANEL
1.7.1.17	10	RIEDEL	AIR (E1/XLR4F)	LIGHTWEIGHT ONE EAR HEADSET ELECTRET
1.7.1.18	2	RIEDEL	PMX-2004 SFP	PNL MULTIPLEXER FOR 4 PNLs (NEEDS SFP)
1.7.1.19	2	RIEDEL	SFP-MADI-SM-1310	FIBRE OPTIC MODULE SINGLE MODE FOR PMX
1.7.1.20	1	RIEDEL	CONNECT TRIO	CONNECT TRIO
1.7.1.21	1	RIEDEL	ISDN	ISDN OPTIONFOR CONNECT TRIO
1.7.1.22	4	RIEDEL	CIA	ARTIST CIA I/F
1.7.1.23	4	RIEDEL	PSU-FBI/CIA/IPX2/D	POWER SUPPLY FOR FBI/CIA
1.7.2	RADIO TALKBACK			
1.7.2.1	4	TWW	TBD	Tait TB 71000 UHF Base Staion 240 v + XLR1/)
1.7.2.2	1	SVB	TBD	Four Port Transmit Hybrid Combiner
1.7.2.3	1	SVB	TBD	Four Port Reciever Splitter Amplifier
1.7.2.4	1	SVB	TBD	Hi Q (3MHz switching) Band Pass Filter 10Mhz offset

1.7.2.5	1	SVB	TBD	Custom patch panel in 4U recessed with 12 x BNC
1.7.2.6	18	TWW	TP9360	TAIT TP9360 UHF HAND PORTABLE
1.7.2.7	3	TWW	TB7100	TAIT TB7100 UHF SIX BAY CHARGER
1.7.3	COMMUNICATIONS			
1.7.3.1	1	GLENSOUND	MPI-005	Broadcasters 3-mobile phone in 1u rack
1.7.3.2	1	GLENSOUND	GSMPI-005/EP	Extra phone for GSMPi005
Ref	Qty	Manufacturer	Model	Description
1.8	SECTION 8: BASIC IT EQUIPMENT			
1.8.1	KVM MATRIX			
1.8.1.1	1	GUNTERMANN & DRUNCK GMBH	A2300035	1RU KVM Matrix DVIcenter DP32 (32 dynamic ports)
1.8.1.2	4	GUNTERMANN & DRUNCK GMBH	DP-CPU	DISPLAY PORT + USB COMPUTER CONVERTER
1.8.1.3	5	GUNTERMANN & DRUNCK GMBH	DVI-CPU	DVI-D + USB COMPUTER CONVERTER
1.8.1.4	6	GUNTERMANN & DRUNCK GMBH	VGA-CPU-UC	VGA + USB COMPUTER OR CONVERTER
1.8.1.5	4	GUNTERMANN & DRUNCK GMBH	DVI-CON	DVI-D + USB CONSOLE CONVERTER
1.8.1.6	24	TBD	MISC	VARIOUS CABLES DVI-D, DISPLAY PORT, HDMI AND VGA FOR CONNECTION OF CONVERTERS
1.8.2	PC / SERVERS			
1.8.2.1	2	HP	PRODESK 600 G1 (J0E78EA#ABS)	Desktop PC 500GB HDD 4GB RAM
1.8.2.2	1	TBD	MISC	1RU RACKMOUNT FOR HP COMPUTERS
1.8.3	NETWORK SWITCHES			
1.8.3.1	1	CDW	SI-MISC-PROD	XS1920-12 ZYXEL 10 GBE SMART SWITCH
1.8.3.2	1	CDW	SI-MISC-PROD	1820-48G POE+ HP 1820-48G POE+ SWITCH
1.8.3.3	1	CDW	SI-MISC-PROD	GS108UK PROSAFE GS108 8 X GIGABIT SWITCH
1.8.3.4	1	NETGEAR	GSM7212P	NETGEAR POE+ SWITCH
1.8.3.5	3	CDW	WNAP320-100UKS	NETGEAR PROSAFE WNAP320 WIRELESS-N ACCES