

## FOR SALE

### High level used Support Trailer in top condition

#### Extra Video/Audio room:

Extra room for editing or EVS or unilateral productions  
Pre-cabled with audio and video connections  
Space for up to 4 people  
Air-condition + Floor-heating  
Independent power system for the video/audio room

#### Storage Area:

High level racks + furnitures  
Kitchen area  
Floor heating system  
2x steering axles  
Electric legs on front + rear side,  
5x electrical cable drums on the left side  
Standard King Pin -106 cm height – top edge  
Distance from the Kingpin to the turning box: 187 cm  
Distance from the Kingpin to the front of the Trailer: 200 cm  
On- board Diesel heating with 100 ltr. Tank  
Electrical awning system above the two doors  
1x 32 Ampere CEE Power system  
MOT Valid until June 2021

The Support Trailer is immediately available



**Technical Specification Support Trailer:**

**Measurements:**

Length: 13,85m

Width: 2,50m

Height: 4,0m

**Square mtrs. storage area:**

23,83m

**Square mtrs. extra room:**

7,68m

**Saddle Height from the King Pin – Standard height:**

106 cm from the ground to the top edge of the Kingpin

Distance King Pin to Trailer turning box: 1,87m

Distance King Pin to the front of the Trailer: 2,0m

**First registration:**

June 2005

**MOT valid until:**

The MOT is valid until June 2021

**Net weight:**

21.900 kg

**Maximum weight:**

30.500 kg

**Maximal Axle weights:**

Maximal 10.000 kg per Axle

**Steering Axles:**

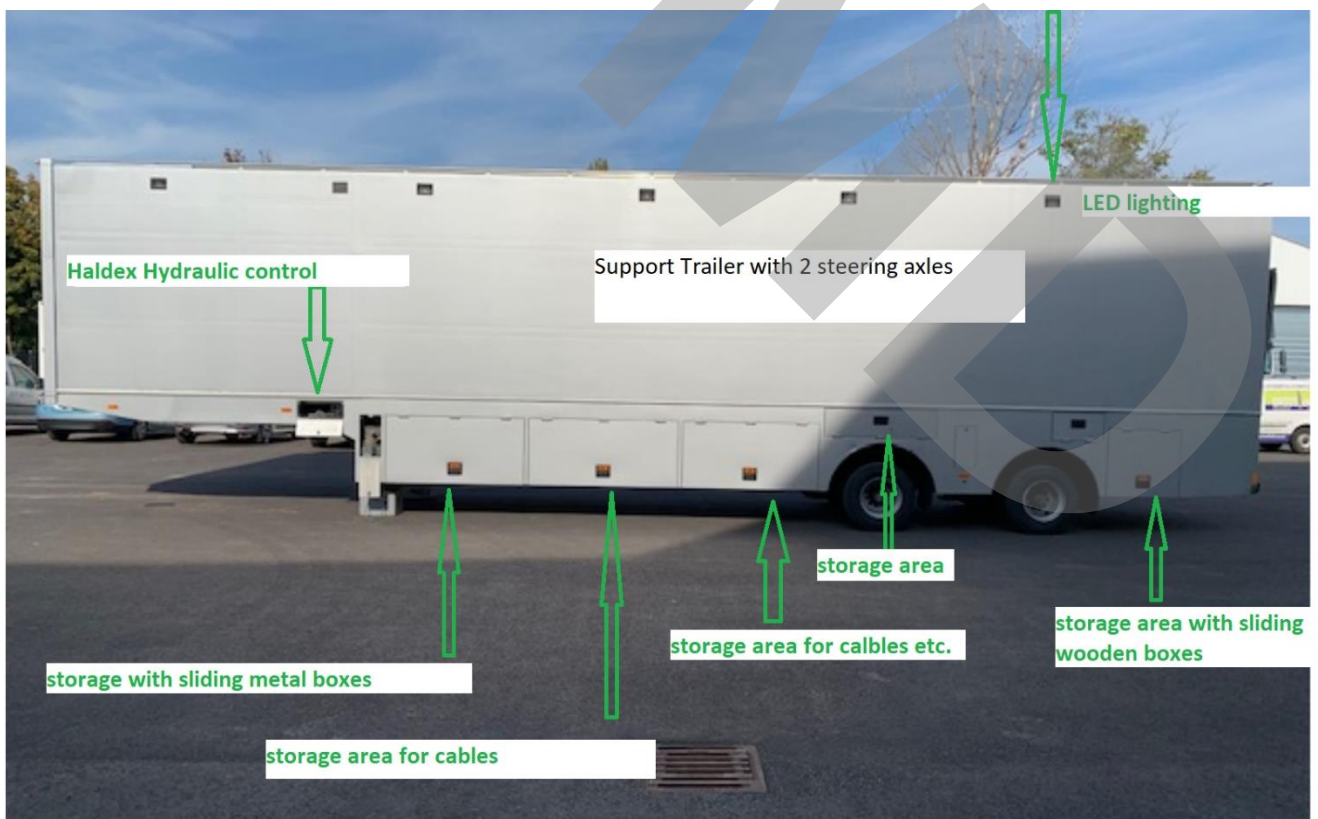
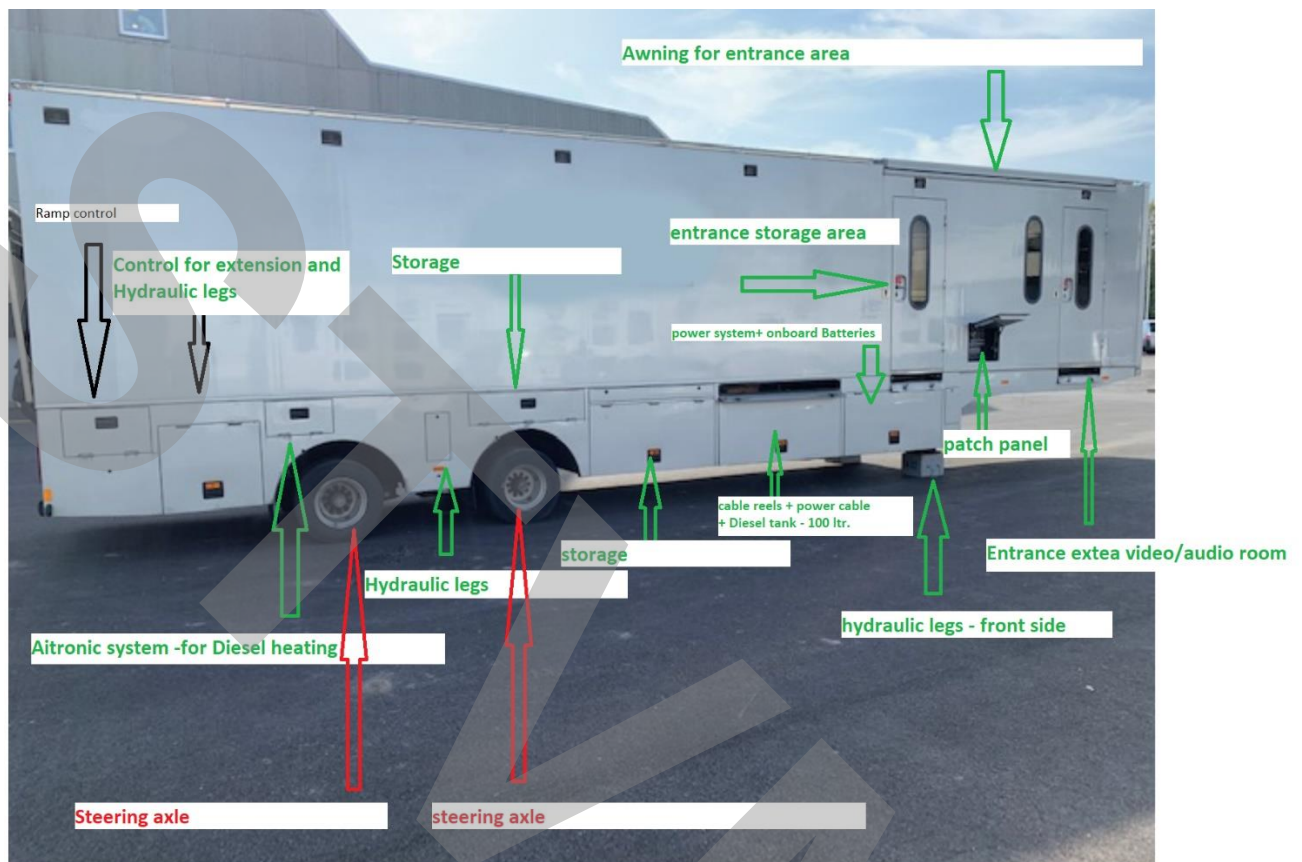
Both axles a steering axles and controlled through a hydraulic system

**Power system:**

1x32 Ampere CEE for the whole Trailer

1x independent power system for the video/audio room

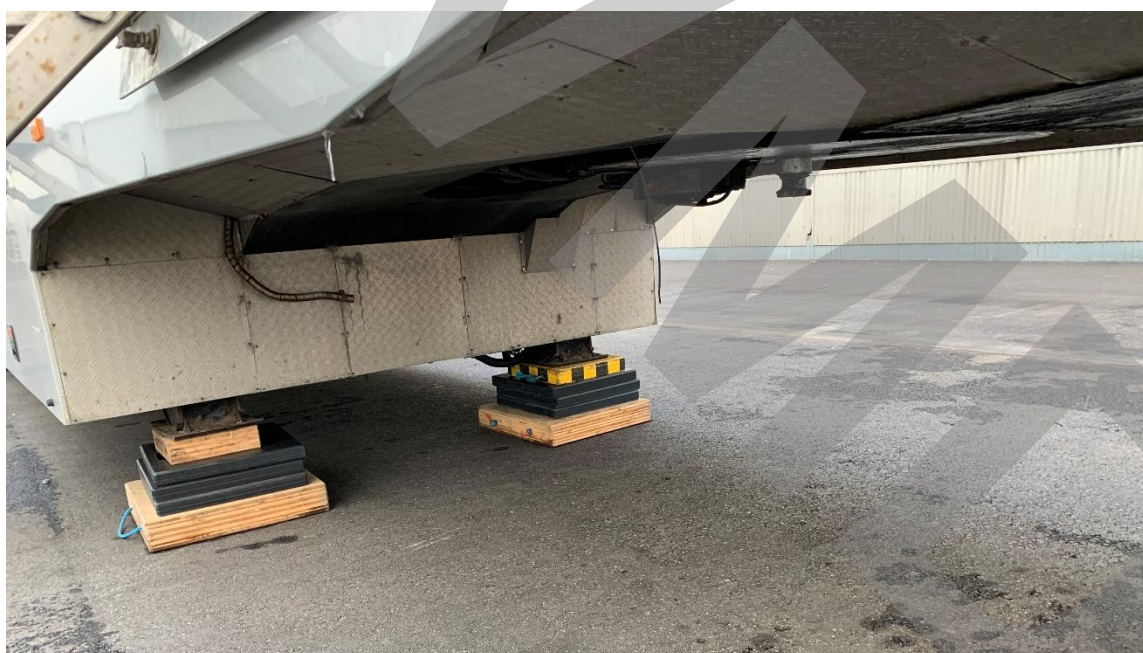
Photos of the Support Trailer:



Used Support Trailer for sale – in top condition



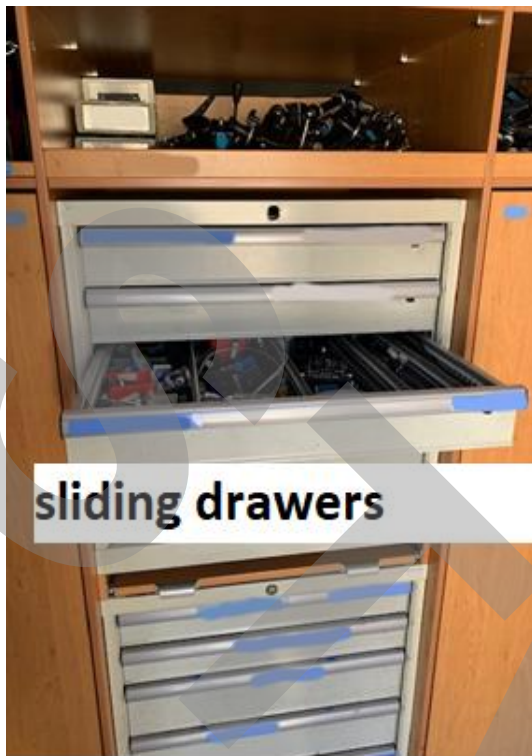












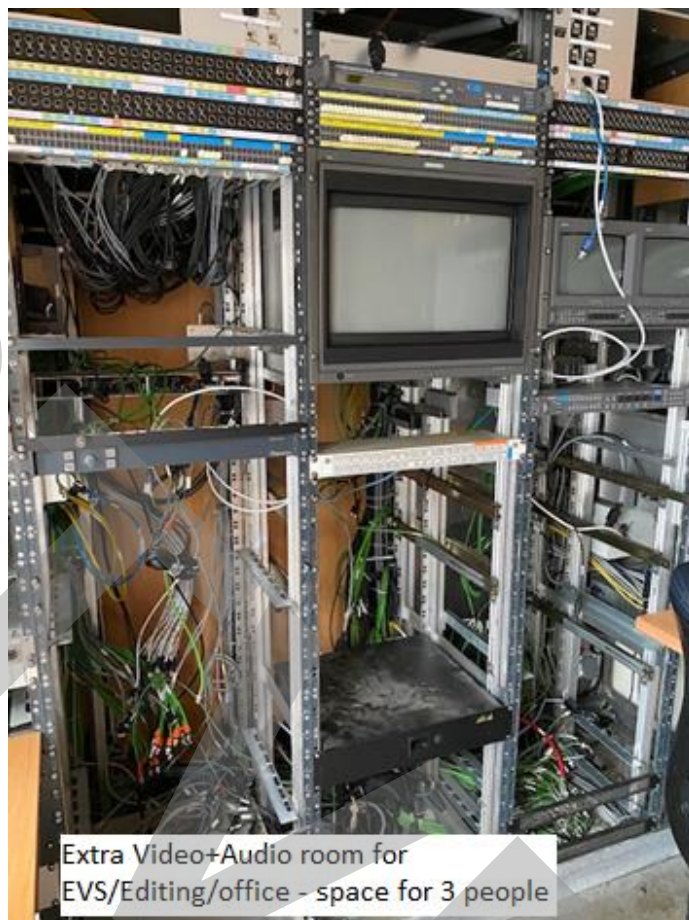


## Foldable table in the kitchen area

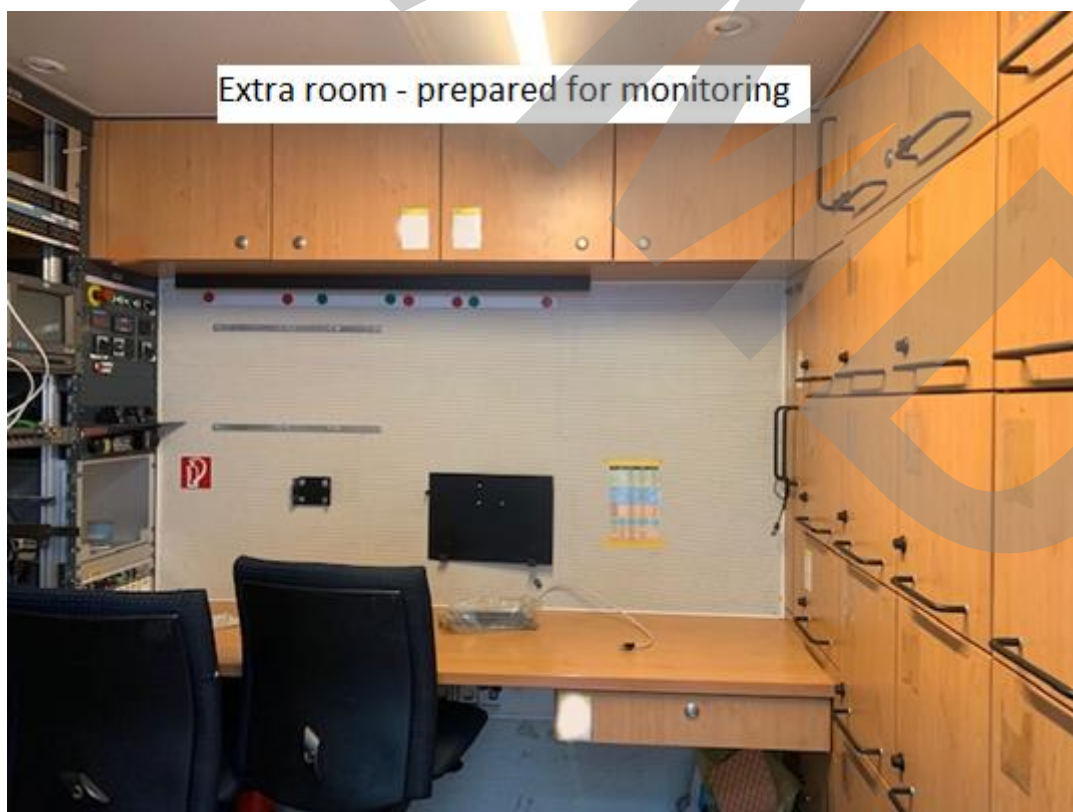




Entrance extra Video/audio room



Extra Video+Audio room for  
EVS/Editing/office - space for 3 people



Extra room - prepared for monitoring



High quality furnitures -drawers and sliding storage doors - some of them are lined with inside with Aluminium. All doors are lockable

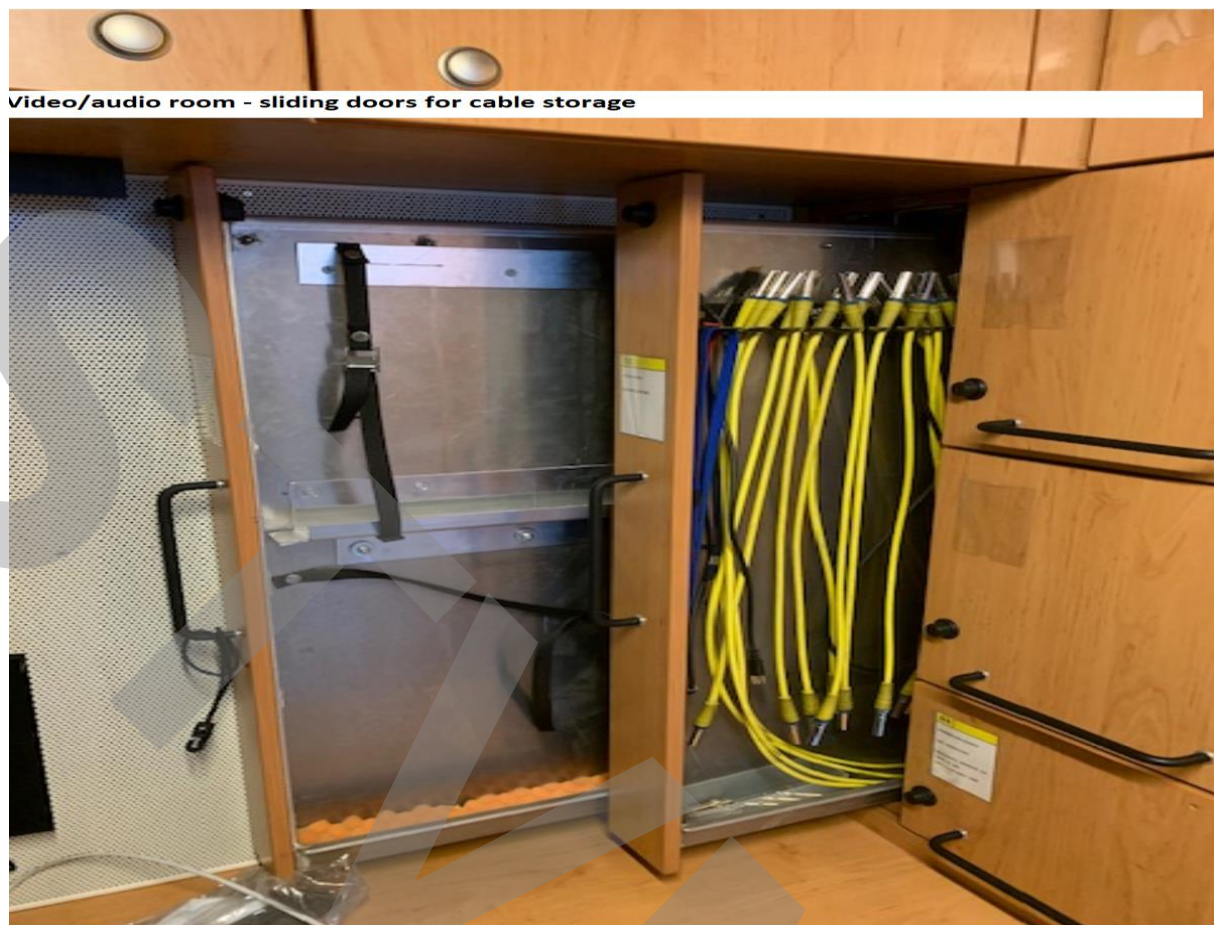


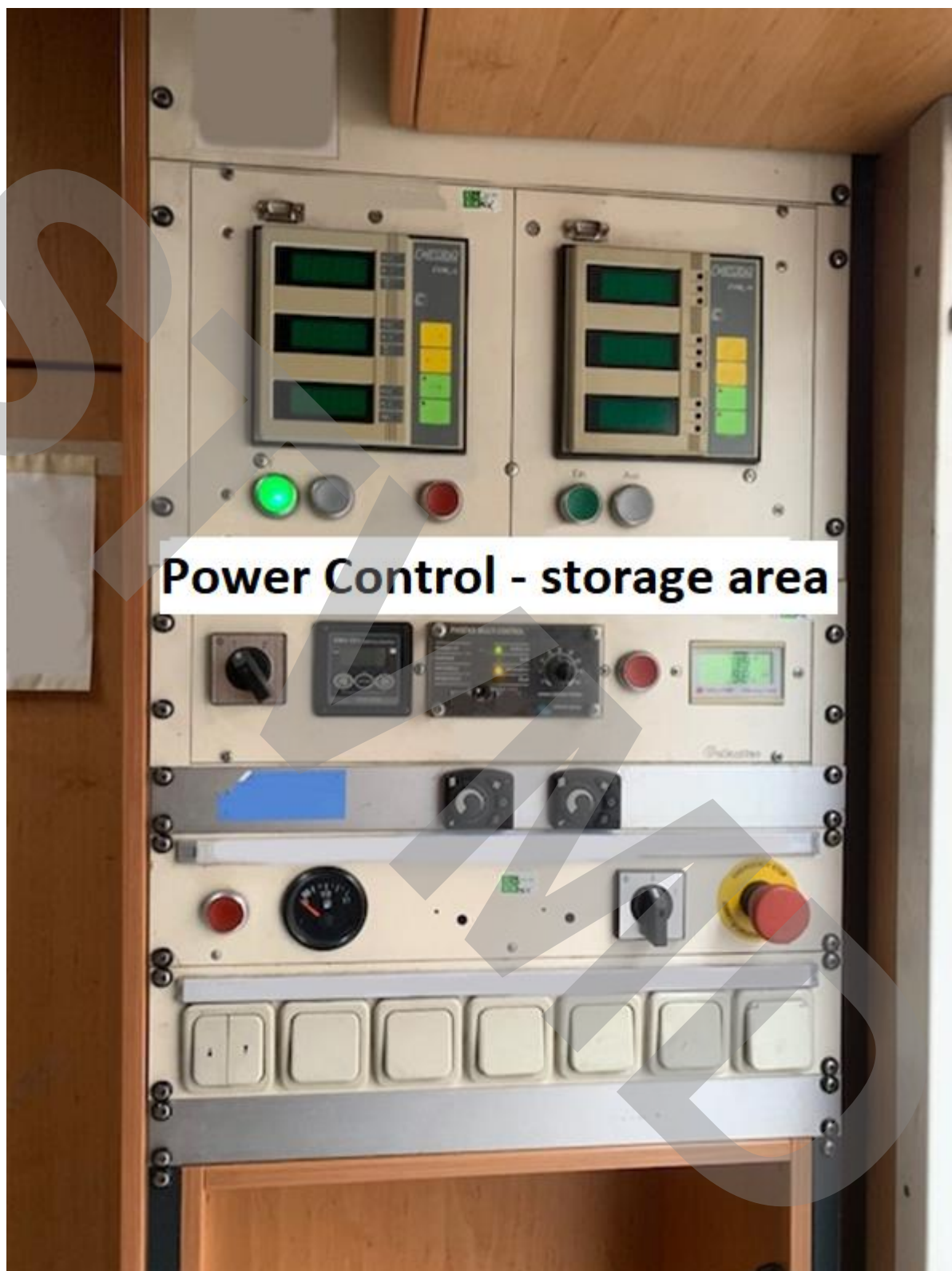
Extra video/audio room

Extra Video/audio room  
Adjustable drawers



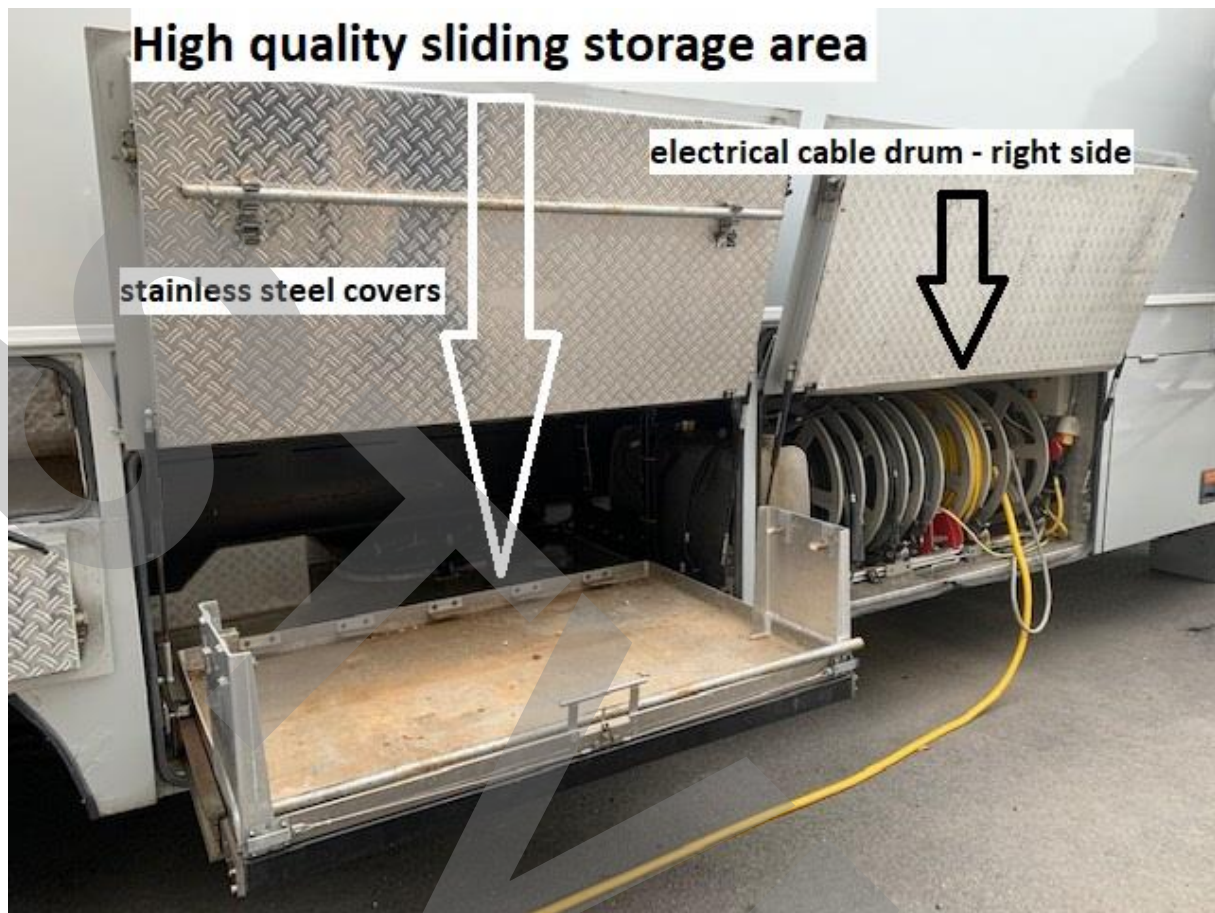








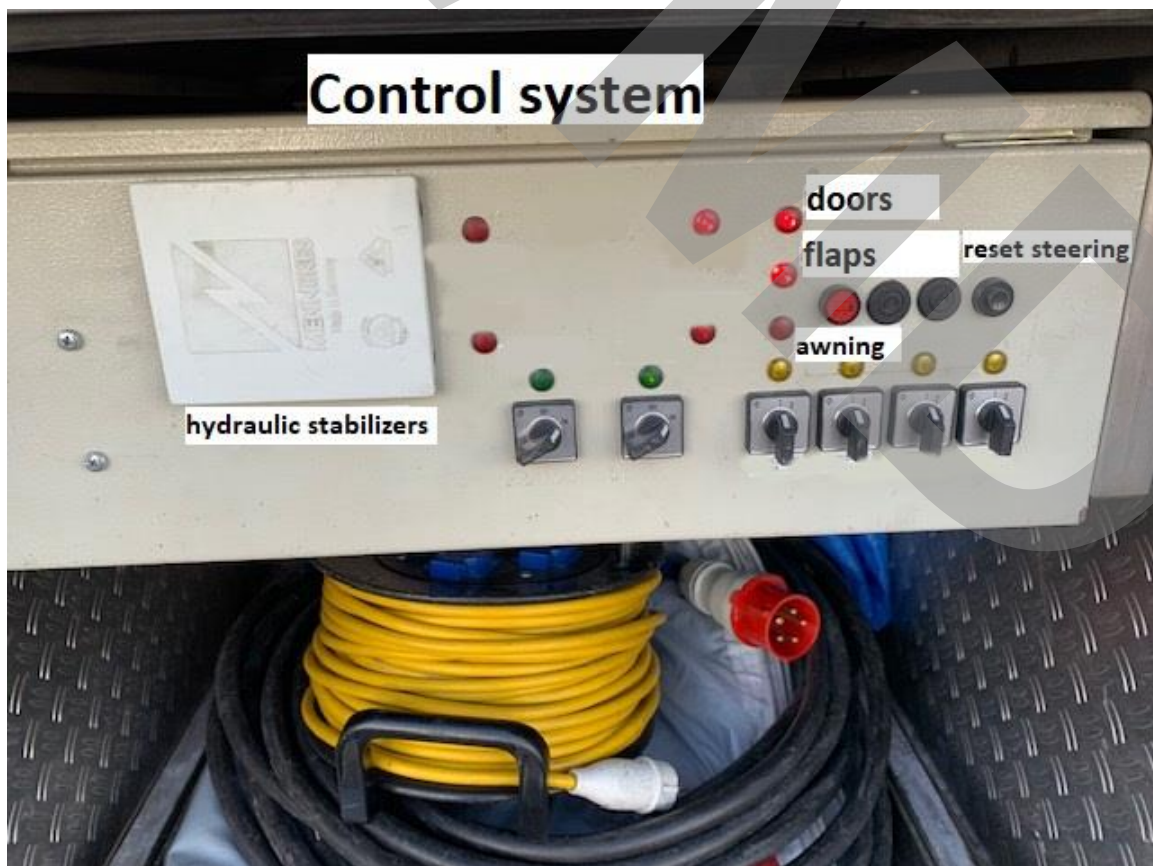


















Front area - aircondition compressor + all connectors for the Tractor



Electrical controlled front legs



Airco control





Equipment List Support Trailer	
1	POWERSYSTEM#GELANTEC#
2	AIRCONDITION#GELANTEC#
3	COLORMONITOR#SONY PVM14L4#FN.2008103
4	COLORMONITOR#SONY PVM9L2#FN.2009329
5	COLORMONITOR#SONY PVM9L2#FN.2009353
6	IMPULSE GENERATOR#PHILIPS PT5210#FN.KU021847
7	DIG.SAT.RECEIVER.#OYSTER DIGITAL85#
8	AUDIO-MATRIX#QUARTZ Q32DA1616BAP#FN.16670*
9	COLORMONITOR#SONY BVM-A20F1M#20014084
10	ALL RACKS -WOODEN AND METAL
11	ALL CONTROL UNITS FOR POWER AND HYDRAULIC SYSTEMS
12	POWER CABLE

**Price on request:**

All prices are excl. taxes  
excl. transportation and insurance costs  
excl. custom fees

**sports tv media**  
**distribution**

Paradeisergasse 9 • 9020 Klagenfurt, Austria  
Tel.: +43 463-90 8000 • Fax: +43 463-90 8000-99  
e-mail: stvmd@stvmd.com • <http://www.stvmd.com>

**For further information please contact:**

**sports tv media**  
**distribution**

Otmar Valzachi  
sports tv media distribution GmbH

Paradeisergasse 9  
9020 Klagenfurt

AUSTRIA

Tel:+43 463 908000  
Fax:+43 463 908000 99  
Mobile:+43 676 848606211  
email: [ov@stvmd.com](mailto:ov@stvmd.com)  
<http://www.stvmd.com>